

# SEARCHABLE REFERENCE TOOL

## Examples of Commonly Confused Products

*New Brunswick Beverage Containers Program*

### **HANDY TIP**



Use the Search function in your PDF reader to look up various products by name.

Hit **"CTRL + F" (Windows)** or **"CMD + F" (Mac)** on your computer's keyboard to open the search box.

# Changes to Exclusion Policy

## New Brunswick Beverage Containers Program

Since April 1, 2020, many beverage containers that used to be excluded from the New Brunswick Beverage Containers Program (BCP) are now deposit-bearing.

Consumers are now charged a deposit fee on many new beverage containers such as beverages with dairy, certain plant-based beverages and sports drinks.

This guide highlights some of the new products that became deposit-bearing within each category since 2020, as well as some other commonly confused products. This document is intended to be a handy reference tool for redemption centres and it will continue to be updated on a regular basis.

### PRODUCT NOT LISTED?

**This document is by no means an all-inclusive list.** If you are unsure about a certain beverage product, send us a photo ([info@encorpatl.ca](mailto:info@encorpatl.ca)) and we will respond as well as include the product as an example in this document.



# Table of Contents

[Beverages with Dairy vs. Milk](#)

[Plant-Based Milk Product Alternatives](#)

[Sports Drinks vs. Meal Replacements, Formulated Liquid Diets & Infant Formula](#)

[Ready-to-Drink vs. Concentrated Beverages](#)

[Other Commonly Confused Products](#)



# Beverages with Dairy vs. Real Milk

## Product Examples

### HANDY TIP

Use the Search function in your PDF reader to look up various products by name.

Hit **"CTRL + F"** (Windows) or **"CMD + F"** (Mac) on your computer's keyboard to open the search box.



# Beverages with Dairy

# VS.

# Real Milk



## Now part of the program

Milk shakes, milk protein shakes, drinkable yogurt, drinkable kefir, eggnog, iced coffee/tea drinks and other beverages made with dairy now have a deposit.

### ON THE LABEL:

- ★ Beverage contains dairy. Milk is listed among the ingredients.
- ★ BUT the **beverage is NOT LABELLED** as real milk.



## Continues to be Excluded

Real milk (cow/goat) – even if flavoured – continues to be excluded.  
No deposit is charged for consumers.

### ON THE LABEL:

- ★ Beverage is labelled as real milk.
- ★ **Cow's milk, i.e. — Low-Fat/Skim Milk (0% M.F.), Partly Skimmed Milk (1%, 2% M.F.), Whole/Homogenized Milk (3.25% M.F.);**
- ★ **Goat milk;**
- ★ **Can be flavoured milk (ex: chocolate, strawberry, banana, etc);**



**Deposit Paid = Refundable**



**No Deposit Paid = Non-Refundable**





## **Beverages with Dairy** — *Example products now included in the program, i.e. refundable.*

**Activia** *Shot Probiotic Drink*

**BFit** *High Protein Milkshake*

**Bio-K** *Plus & Kidz Probiotic — dairy culture, fermented rice, fermented soy, etc.*

**Bolthouse Farms** *Coffee & Tea Beverages*

**Binggrae** *Banana Flavoured Milk Beverage*

**Coffee Bean** *Hazelnut Latte*

**Danino** *Drinkable Yogurt*

**Fairlife** *Core Power — High Protein Milk Shake*

**Good Mood Farm** *Kefir*

**Hershey's** *Milk Shake*

**International Delight** *Iced Coffee*

**IÖGO nanö** *Drinkable Yogurt*

**Liberté** *Kefir*

**Lifeway** *Kefir*

**Milk2Go Sport** *Milk Protein Shake, PRO Milk Protein Shake*

**Neilson** *Milkshake*

**Neilson** *Eggnog*

**Nestlé** *Milkshake*

**Nestlé** *Nesquik "Flavoured Milk Beverage"*

**Northumberland** *Eggnog*

**President's Choice** *Eggnog*

**Real Shake** *Milkshake*




**Beverages with Dairy** — *Example products now included in the program, i.e. refundable.*

Riviera *Plant-Based Kefir*

Starbucks *Frappuccino & other coffee beverages*

Tim Hortons *Iced Coffee, Iced Capp & other coffee beverages*

YOP *Drinkable Yogurt*

 **Real Milk** — *Example products that remain excluded from the program, i.e. non-refundable.*

**Baxter** *Milk products — 0%, 1%, 2%, 3.25%, etc.*

**JOYYA** *Ultrafiltered milk products — 0%, 1%, 2%, 3.25%, etc.*

**Liberté** *Goat's milk*

**Milk 2 Go** *Partly-skimmed milk (1% and 2% ) with artificial flavouring*

**Milk 2 Go** *1% M.F. chai tea partly-skimmed milk & 1% M.F. iced coffee partly-skimmed milk*

**Natrel** *Fine-filtered milk products — 0%, 1%, 2%*

**Natrel** *Lactose-free ultrafiltered milk products — 0%, 1%*

**Northumberland** *Milk products — 0% 1%, 2% regular & chocolate, 3.25%, etc*

**Northumberland** *Milk on the Moove — 1% and 2% M.F. partly-skimmed milk with flavouring*





# Beverages with Dairy — Milkshakes

## MILKSHAKE

Beverage is **NOT LABELLED** as real milk.

Dairy is only included as part of the ingredient list.



### **Neilson Milkshake — Various Flavours**

*French Vanilla, Strawberry, Caramilk, Crispy Crunch, Mr. Big .*

*Various flavours included, a deposit is paid & can be refunded.*



# Beverages with Dairy — Milkshakes

## MILKSHAKE

Beverage is **NOT LABELLED** as real milk.

Dairy is only included as part of the ingredient list.



**Nestlé Milk Shake — Various Flavours**  
Oh Henry, Coffee Crisp, Rolo.

*Various flavours included, a deposit is paid & can be refunded.*



# Beverages with Dairy — Milkshakes

## MILKSHAKE

Beverage is **NOT LABELLED** as real milk.

Dairy is only included as part of the ingredient list.



**Hershey's Milk Shake — Various Flavours**  
Creamy Chocolate, Cookies'n' Cream, Double Chocolate.

*Various flavours included, a deposit is paid & can be refunded.*



# Beverages with Dairy — Milkshakes

## MILKSHAKE

Beverage is **NOT LABELLED** as real milk.

Dairy is only included as part of the ingredient list.



### **Real Shake**

*All flavours included, a deposit is paid & can be refunded.*



# Beverages with Dairy

## FLAVOURED MILK BEVERAGES

Beverage is **NOT LABELLED** as real **milk**.

Dairy is only included as part of the ingredient list.



**Nestlé Nesquik — Flavoured Milk Beverage**  
*All flavours included, a deposit is paid & can be refunded.*



# Beverages with Dairy

## FLAVOURED MILK BEVERAGES

Beverage is **NOT LABELLED** as real **milk**.

Dairy is only included as part of the ingredient list.



***Binggrae Banana — Flavoured Milk Beverage***  
*All flavours included, a deposit is paid & can be refunded.*



# Beverages with Dairy — Milk Protein Shake

## MILK PROTEIN SHAKE

Beverage is **NOT LABELLED** as **real milk**.

Dairy is only included as part of the ingredient list.



**Fairlife Core Power High Protein Milk Shake**  
*All flavours included, a deposit is paid & can be refunded.*



# Beverages with Dairy — Milk Protein Shake

## MILK PROTEIN SHAKE

Beverage is **NOT LABELLED** as **real milk**.

Dairy is only included as part of the ingredient list.



### ***BFit High Protein Milkshake***

*All flavours included, a deposit is paid & can be refunded.*





# Beverages with Dairy — Milk Protein Shake

## MILK PROTEIN SHAKE

Beverage is NOT LABELLED as real milk.

Dairy is only included as part of the ingredient list.



**Milk 2 Go Sport Milk Protein Shake**

*All flavours included, a deposit is paid & can be refunded.*

**Milk 2 Go Sport PRO Milk Protein Shake**

*All flavours included, a deposit is paid & can be refunded.*



# Beverages with Dairy — Drinkable Yogurt

## DRINKABLE YOGURT

Beverage is **NOT LABELLED** as real milk.

Dairy is only included as part of the ingredient list.



### **YOP Drinkable Yogurt**

*All types & flavours included, a deposit is paid & can be refunded.*



# Beverages with Dairy — Drinkable Yogurt

## DRINKABLE YOGURT

Beverage is **NOT LABELLED** as real milk.

Dairy is only included as part of the ingredient list.



### ***Danino Drinkable Yogurt***

*All types & flavours included, a deposit is paid & can be refunded.*



# Beverages with Dairy — Drinkable Yogurt

## DRINKABLE YOGURT

Beverage is **NOT LABELLED** as real milk.

Dairy is only included as part of the ingredient list.



***IÖGO nanö Drinkable Yogurt***

*All types & flavours included, a deposit is paid & can be refunded.*



# Beverages with Dairy — Drinkable Yogurt

## DRINKABLE YOGURT

Beverage is **NOT LABELLED** as real milk.

Dairy is only included as part of the ingredient list.



### **Activia Shot Probiotic Drink**

*All flavours included, a deposit is paid & can be refunded.*



# Beverages with Dairy — Kefir

## KEFIR

Beverage is **NOT LABELLED** as real milk.

Dairy is only included as part of the ingredient list. *Kefir is made with fermented milk.*



### **Liberté Kefir**

*All flavours included, a deposit is paid & can be refunded.*



# Beverages with Dairy — Kefir

## KEFIR

Beverage is **NOT LABELLED** as real milk.

Dairy is only included as part of the ingredient list. *Kefir is made with fermented milk.*



### **Good Mood Farm Kefir**

*All flavours included, a deposit is paid & can be refunded.*



# Beverages with Dairy — Kefir

## KEFIR

Beverage is **NOT LABELLED** as real milk.

Dairy is only included as part of the ingredient list. *Kefir is made with fermented milk.*



### ***Lifeway Kéfir***

*All flavours included, a deposit is paid & can be refunded.*





# Beverages with Dairy — Kefir

## PLANT-BASED KEFIR

Beverage is labelled as kefir.

*Drinkable kefir (whether it contains dairy or plant-based products) is included in the program.*



### **Riviera's Plant-Based Kefir**

*All flavours included, a deposit is paid & can be refunded.*



# Beverages with Dairy — Fermented Milk

## FERMENTED MILK

Beverage is **NOT LABELLED** as real milk.

Dairy is only included as part of the ingredient list. *The products are made with fermented milk.*



### ***Bio-K Plus and Bio-K Kidz***

*All flavours included, a deposit is paid & can be refunded.*



# Beverages with Dairy — Coffee & Tea Beverages

## COFFEE & TEA BEVERAGES

Beverage is **NOT LABELLED** as real milk.

Dairy is only included as part of the ingredient list.



### **Starbucks Coffee Beverages**

*All flavours included, a deposit is paid & can be refunded.*



# Beverages with Dairy — Coffee & Tea Beverages

## COFFEE & TEA BEVERAGES

Beverage is **NOT LABELLED** as real milk.

Dairy is only included as part of the ingredient list.



**Tim Hortons — Iced Capp & Iced Coffee Beverages**  
All types & flavours included, a deposit is paid & can be refunded.



# Beverages with Dairy — Coffee & Tea Beverages

## COFFEE & TEA BEVERAGES

Beverage is **NOT LABELLED** as real milk.

Dairy is only included as part of the ingredient list.



**Bolthouse Farms — Coffee & Tea Beverages**  
*All types & flavours included, a deposit is paid & can be refunded.*



# Beverages with Dairy — Coffee & Tea Beverages

## COFFEE & TEA BEVERAGES

Beverage is **NOT LABELLED** as real milk.

Dairy is only included as part of the ingredient list.



**Coffee Bean's Hazelnut Latte — Coffee & Tea Beverages**  
All types & flavours included, a deposit is paid & can be refunded.



# Beverages with Dairy — Coffee & Tea Beverages

## COFFEE & TEA BEVERAGES

Beverage is **NOT LABELLED** as real milk.

Dairy is only included as part of the ingredient list.



***International Delight's Iced Coffee — Coffee Beverages***  
*All types & flavours included, a deposit is paid & can be refunded.*



# Beverages with Dairy — Egnog

## EGGNOG

Beverage is **NOT LABELLED** as real milk.

Dairy is only included as part of the ingredient list.



### **Neilson Egnog**

*All flavours included, a deposit is paid & can be refunded.*





# Beverages with Dairy — Egnog

## EGGNOG

Beverage is **NOT LABELLED** as real milk.

Dairy is only included as part of the ingredient list.



### ***Northumberland Eggnog***

*All flavours included, a deposit is paid & can be refunded.*



# Beverages with Dairy — Eggnog

## EGGNOG

Beverage is **NOT LABELLED** as real milk.

Dairy is only included as part of the ingredient list.



### ***President's Choice Eggnog***

*All flavours included, a deposit is paid & can be refunded.*



# Labelled as Real Milk — Cow's Milk

## COW'S MILK

Beverage is **labelled as 'milk'**, i.e. —  
*ultra-filtered milk, low fat/skim milk (0% M.F.),  
partly skimmed milk (1% M.F., 2% M.F.),  
or whole / homogenized milk (3.25% M.F.)*

Cow's milk is considered **an essential nutritional product.**



### **Cow's Milk— \*All brands**

*Northumberland Milk products (0%, 1%, 2% regular & chocolate, 3.25%, etc).*

*All types & flavours are excluded, no deposit is charged.*

# Labelled as Real Milk — Cow's Milk

## COW'S MILK

Beverage is **labelled as 'milk'**, i.e. —  
*ultra-filtered milk, low fat/skim milk (0% M.F.),  
partly skimmed milk (1% M.F., 2% M.F.),  
or whole / homogenized milk (3.25% M.F.)*

Cow's milk is considered **an essential nutritional product.**



### **Cow's Milk— \*All brands**

*Baxter Milk products (0%, 1%, 2%, 3.25%, etc.).*

*All types & flavours are excluded, no deposit is charged.*

# ⊗ Labelled as Real Milk — Goat's Milk

## GOAT'S MILK

Beverage is **labelled as 'milk'**, i.e. —  
*ultra-filtered milk, low fat/skim milk (0% M.F.),  
partly skimmed milk (1% M.F., 2% M.F.),  
or whole / homogenized milk (3.25% M.F.)*

Goat's milk is considered **an essential nutritional product.**



### Goat's Milk— \*All brands

Example products include, but not limited to: Liberté Goat Milk (3.25%).

All types & flavours are excluded, no deposit is charged.

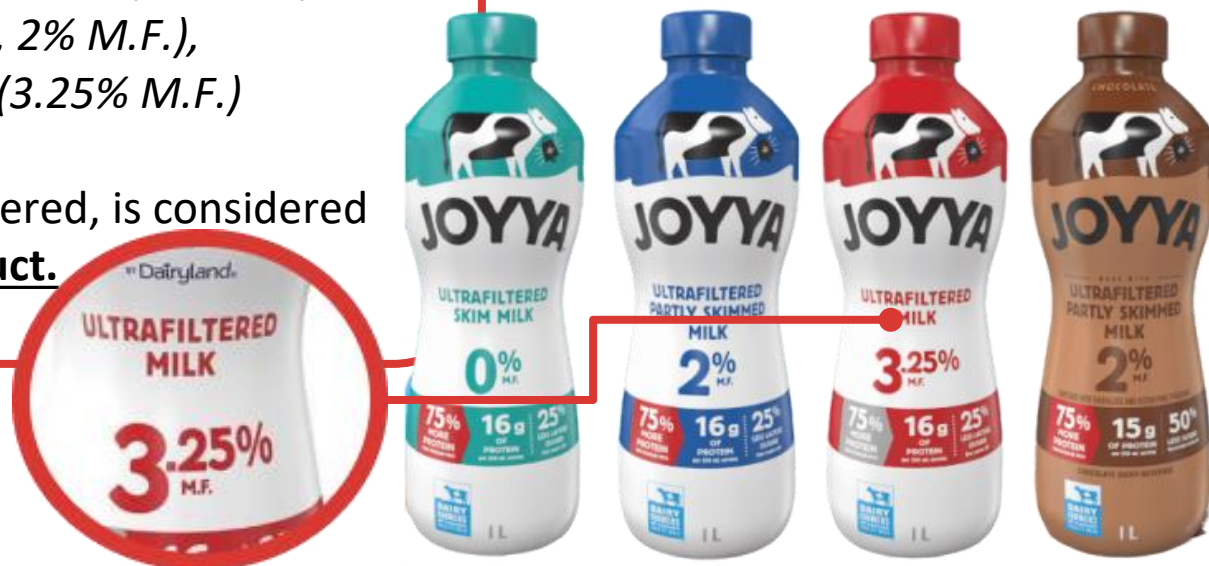


# Labelled as Real Milk — Filtered Milk

## FILTERED MILK

Beverage is **labelled as 'milk'**, i.e. —  
*ultra-filtered milk, low fat/skim milk (0% M.F.),  
partly skimmed milk (1% M.F., 2% M.F.),  
or whole / homogenized milk (3.25% M.F.)*

Cow's milk, including ultra-filtered, is considered  
**an essential nutritional product.**



### JOYYA's Ultrafiltered Milk Products

Example — Ultrafiltered skim milk (0%), Ultrafiltered partly skimmed 2% milk,  
Ultrafiltered partly skimmed 2% chocolate milk, Ultrafiltered 3.25% milk.

All types & flavours are excluded, no deposit is charged.

# ⊗ Labelled as Real Milk — Filtered Milk

## FILTERED MILK

Beverage is **labelled as 'milk'**, i.e. —  
*ultra-filtered milk, low fat/skim milk (0% M.F.),  
partly skimmed milk (1% M.F., 2% M.F.),  
or whole / homogenized milk (3.25% M.F.)*

Cow's milk, including fine-filtered, is considered **an essential nutritional product.**



### **Natrel's Fine Filtered Milk Products**

*Example — Fine-filtered skim milk (0%), Fine-filtered 1% milk, Fine-filtered 2% milk.*

*All types & flavours are excluded, no deposit is charged.*

# ⊗ Labelled as Real Milk — Lactose-free Milk

## LACTOSE-FREE MILK

Beverage is **labelled as 'milk'**, i.e. —  
*ultra-filtered milk, low fat/skim milk (0% M.F.),  
partly skimmed milk (1% M.F., 2% M.F.),  
or whole / homogenized milk (3.25% M.F.)*

Lactose-free cow's milk is considered **an essential nutritional product.**



### Natrel's Lactose-free Milk Products — All flavours

Example — Lactose-free ultrafiltered skim milk (0%), Lactose-free ultrafiltered partly-skimmed chocolate milk (1%).

All types & flavours are excluded, no deposit is charged.





# Labelled as Real Milk — Flavoured Cow's Milk

## FLAVOURED COW'S MILK

Beverage is **labelled as 'milk'**, i.e. —  
*ultra-filtered milk, low fat/skim milk (0% M.F.),  
partly skimmed milk (1% M.F., 2% M.F.),  
or whole / homogenized milk (3.25% M.F.)*

Cow's milk, including flavoured milk, is considered **an essential nutritional product.**



**Milk on the Moove Partly-skimmed Milk (1% and 2% )**

*All types & flavours are excluded, no deposit is charged.*



# Labelled as Real Milk — Flavoured Cow's Milk

## FLAVOURED COW'S MILK

Beverage is labelled as 'milk', i.e. —  
*ultra-filtered milk, low fat/skim milk (0% M.F.),  
partly skimmed milk (1% M.F., 2% M.F.),  
or whole / homogenized milk (3.25% M.F.)*

Cow's milk, including flavoured milk, is considered an essential nutritional product.



**Milk 2 Go Partly-skimmed Milk (1% and 2%)**  
*All types & flavours are excluded, no deposit is charged.*



# ⊗ Labelled as Real Milk — Caffeinated 1% Milk

## CAFFEINATED 1% MILK

Beverage is **labelled as 'milk'**, i.e. —  
*ultra-filtered milk, low fat/skim milk (0% M.F.),  
partly skimmed milk (1% M.F., 2% M.F.),  
or whole / homogenized milk (3.25% M.F.)*

Cow's milk, including flavoured milk, is considered **an essential nutritional product.**



**\*\* Although these may look like a coffee or tea drink, these beverages are real milk with an added flavour.**



**Milk 2 Go — 1% M.F. Iced Chai Tea Latte & 1% M.F. Iced Coffee**  
Each beverage is labeled as “partly skimmed milk (1% M.F.)”.

*The products are excluded, no deposit is charged.*

# Plant-Based Milk Product Alternatives

## Product Examples

### **HANDY TIP**

Use the Search function in your PDF reader to look up various products by name.

Hit **"CTRL + F" (Windows)** or **"CMD + F" (Mac)** on your computer's keyboard to open the search box.



# Unfortified OR NOT a Source of Protein

# VS.

# Fortified & A Source of Protein

## ✓ Now part of the program

Most Plant-based beverages now have a deposit. Those labelled as “fortified” have a deposit ONLY IF the warning “not a source of protein” is also on the label.

## ✗ Continues to be Excluded

Plant-based beverages that are labelled as “fortified” and considered a source of protein continue to be excluded. No deposit charged for consumers.

### ON THE LABEL:

- ★ Beverage is **NOT LABELLED** as “fortified”  
- OR -
- ★ Includes a **warning that the beverage is “Not a Source of Protein”**.  
- OR -
- ★ Beverage is **labelled as BOTH** “fortified” and “Not a Source of Protein”.



### ON THE LABEL:

- ★ Must state beverage is “fortified”.
- ★ **Must NOT** have a warning about the beverage being “Not a Source of Protein”.

## ✓ Deposit Paid = Refundable

## ✗ No Deposit Paid = Non-Refundable



## Plant-based Milk Product Alternatives — *Example products now included in the program, i.e. refundable.*

[Blue Diamond](#) *Almond Breeze*

[Bolthouse Farms](#) *Dairy-free plant milk beverage*

[Califia Farms](#) *Almond Beverage*

[Coconut Dream](#) *Coconut Beverage*

[Earth's Own](#) *So Fresh — Cashew Beverage*

[Earth's Own](#) *So Fresh & So Nice — Almond Beverage*

[Earth's Own](#) *So Fresh — Oat Beverage*

[Kirkland](#) *Almond Beverage*

[Moodrink](#) *Oat Beverage*

[Natura](#) *Almond Beverage*

[Natura](#) *Rice Beverage*

[President's Choice](#) *Organics — Almond Beverage*

[Rice Dream](#) *Rice Beverage*

[Ripple](#) *Plant-based milk beverage*

[Silk](#) *Cashew Beverage*

[Silk](#) *Almond Beverage*

[Silk](#) *Coconut Beverage*

[So Delicious](#) *Coconut Beverage — original, holiday nog*

[Sproud](#) *Plant-based beverage*

[Veggemio](#) *Veggie-based beverage*



**Plant-based Milk Product Alternatives** — *Example products that remain excluded from the program, i.e. non-refundable.*

Hope and Sesame *Sesame Beverage*

Natura *Organic Soy Beverage*

Silk *Organic Soy Beverage*

Silk *Protein — Almond & Cashew Beverage*

YoFiit *Miylk 10 — Chickpea & Flaxseed Beverage*

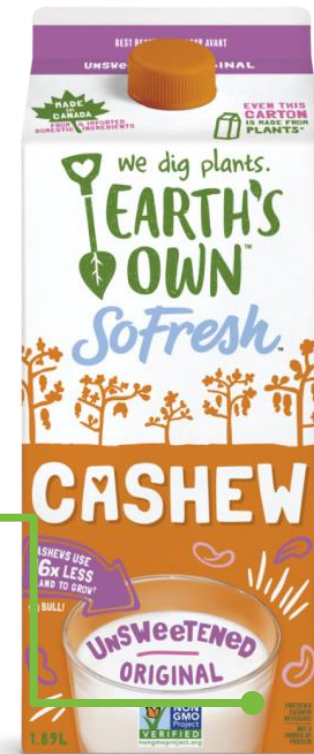


# Milk Alternatives — Fortified Cashew Beverage

## FORTIFIED CASHEW BEVERAGE

Beverage is a nut-based milk alternative.

Product's label clearly states that it is both a **fortified beverage & not a source of protein.**



**Earth's Own So Fresh — Cashew Beverage**  
*All Flavours included, a deposit is paid & can be refunded.*





# Milk Alternatives — Fortified Cashew Beverage

## FORTIFIED CASHEW BEVERAGE

Beverage is a nut-based milk alternative.

Product's label clearly states that it is both a **fortified beverage & not a source of protein.**



### **Silk — Cashew Beverage**

*All flavours included, a deposit is paid & can be refunded.*



# Milk Alternatives — Fortified Almond Beverage

## FORTIFIED ALMOND BEVERAGE

Beverage is a nut-based milk alternative.

Product's label clearly states that it is both a **fortified beverage & not a source of protein.**



**Earth's Own So Nice — Almond Beverage**  
*All flavours included, a deposit is paid & can be refunded.*

**Earth's Own So Fresh — Almond Beverage**  
*All flavours included, a deposit is paid & can be refunded.*



# Milk Alternatives — Fortified Almond Beverage

## FORTIFIED ALMOND BEVERAGE

Beverage is a nut-based milk alternative.

Product's label clearly states that it is both a **fortified beverage & not a source of protein.**



### ***Silk — Almond Beverage***

*All flavours included, a deposit is paid & can be refunded.*



# Milk Alternatives — Fortified Almond Beverage

## FORTIFIED ALMOND BEVERAGE

Beverage is a nut-based milk alternative.

Product's label clearly states that it is both a **fortified beverage & not a source of protein.**



**Blue Diamond — Almond Breeze Beverage**  
*All flavours included, a deposit is paid & can be refunded.*



# Milk Alternatives — Fortified Almond Beverage

## FORTIFIED ALMOND BEVERAGE

Beverage is a nut-based milk alternative.

Product's label clearly states that it is both a **fortified beverage & not a source of protein.**



**Kirkland — Fortified Almond Beverage**

*All flavours included, a deposit is paid & can be refunded.*



# Milk Alternatives — Fortified Almond Beverage

## FORTIFIED ALMOND BEVERAGE

Beverage is a nut-based milk alternative.

Product's label clearly states that it is both a **fortified beverage & not a source of protein.**



### **PC Organics — Almond Beverage**

*All flavours included, a deposit is paid & can be refunded.*



# Milk Alternatives — Fortified Almond Beverage

## FORTIFIED ALMOND BEVERAGE

Beverage is a nut-based milk alternative.

Product's label clearly states that it is both a **fortified beverage & not a source of protein.**



**Natura — Almond Beverage**

*All flavours included, a deposit is paid & can be refunded.*



# Milk Alternatives — Unfortified Almond Beverage

## UNFORTIFIED ALMOND BEVERAGE

Beverage is a nut-based milk alternative, which is **not fortified**.

**All unfortified plant-based beverages** have a deposit.



The product ***is not labelled*** as “fortified”.

**Califia Farms — Almond Beverage**  
All flavours included, a deposit is paid & can be refunded.





# Milk Alternatives — Fortified Oat Beverage

## FORTIFIED OAT BEVERAGE

Beverage is a plant-based milk alternative.

Product's label clearly states that it is both a **fortified beverage & not a source of protein.**



**Earth's Own So Fresh — Oat Beverage**

*All flavours included, a deposit is paid & can be refunded.*



# Milk Alternatives — Fortified Oat Beverage

## UNFORTIFIED OAT BEVERAGE

Beverage is a plant-based milk alternative, which is **not fortified**.

**All unfortified plant-based beverages** have a deposit.



### **Moodrink — Oat Beverage**

*All flavours included, a deposit is paid & can be refunded.*



# Milk Alternatives — Fortified Rice Beverage

## FORTIFIED RICE BEVERAGE

Beverage is a plant-based milk alternative.

Product's label clearly states that it is both a **fortified beverage & not a source of protein.**



### **Natura — Rice Beverage**

*All flavours included, a deposit is paid & can be refunded.*



# Milk Alternatives — Fortified Rice Beverage

## FORTIFIED RICE BEVERAGE

Beverage is a plant-based milk alternative.

Product's label clearly states that it is both a **fortified beverage & not a source of protein.**



**Rice Dream — Rice Beverage**

*All flavours included, a deposit is paid & can be refunded.*



# Milk Alternatives — Unfortified Coconut Beverage

## UNFORTIFIED COCONUT BEVERAGE

Beverage is a plant-based milk alternative, which is **not fortified**.

**All unfortified plant-based beverages** have a deposit.



! The product ***is not labelled*** as “fortified”.

**So Delicious — Coconut Beverage**

*All flavours included, a deposit is paid & can be refunded.*



# Milk Alternatives — Unfortified Coconut Beverage

## UNFORTIFIED COCONUT BEVERAGE

Beverage is a plant-based milk alternative, which is **not fortified**.

**All unfortified plant-based beverages** have a deposit.



The product **is not labelled** as “fortified”.

### **Coconut Dream Beverage**

*All flavours included, a deposit is paid & can be refunded.*



# Milk Alternatives — Fortified Coconut Beverage

## FORTIFIED COCONUT BEVERAGE

Beverage is a plant-based milk alternative.

Product's label clearly states that it is both a **fortified beverage & not a source of protein.**



### **Silk — Coconut Beverage**

*All flavours included, a deposit is paid & can be refunded.*



# Milk Alternatives — Fortified Plant-based Beverage

## FORTIFIED PLANT-BASED BEVERAGE

Beverage is a plant-based milk alternative.

Product's label clearly states that it is both a **fortified beverage & not a source of protein.**



**Veggemo — Veggie Based Non-Dairy Beverage**  
All flavours included, a deposit is paid & can be refunded.





# Milk Alternatives — Unfortified Plant-based Beverage

## UNFORTIFIED PLANT-BASED BEVERAGE

Beverage is a plant-based milk alternative, which is **not fortified**.

**All unfortified plant-based beverages** have a deposit.



The product ***is not*** labelled as “fortified”.

### **Ripple — Dairy-Free Plant Based Milk**

All flavours included, a deposit is paid & can be refunded.



# Milk Alternatives — Unfortified Plant-based Beverage

## UNFORTIFIED PLANT-BASED BEVERAGE

Beverage is a plant-based milk alternative, which is **not fortified**.

**All unfortified plant-based beverages** have a deposit.



The product ***is not*** labelled as “fortified”.

***Bolthouse Farms — Dairy-Free Plant Milk Protein Beverage***

*All flavours included, a deposit is paid & can be refunded.*



# Milk Alternatives — Unfortified Plant-based Beverage

## UNFORTIFIED PLANT-BASED BEVERAGE

Beverage is a plant-based milk alternative, which is **not fortified**.

**All unfortified plant-based beverages** have a deposit.



! The product ***is not labelled*** as “fortified”.

### ***Sproud — Plant-Based Beverage***

*All types & flavours included, a deposit is paid & can be refunded.*



# Milk Alternatives — Fortified & Source of Protein

## FORTIFIED SOY BEVERAGE

Beverage is a plant-based milk alternative.

Product's label must state that it is a **fortified beverage**, and it **must not have any warning about the beverage being “not a source of protein”**.

Plant-based milk alternatives that are fortified & a source of protein are excluded – no deposit is charged.



*The product is labelled as fortified, **BUT it is not labelled** as “not a source of protein”.*



**Natura Organic Soy Beverage**  
*All types & flavours are excluded, no deposit is charged.*



# Milk Alternatives — Fortified & Source of Protein

## FORTIFIED SOY BEVERAGE

Beverage is a plant-based milk alternative.

Product's label must state that it is a **fortified beverage**, and it **must not have any warning about the beverage being “not a source of protein”**.

Plant-based milk alternatives that are fortified & a source of protein are excluded – no deposit is charged.



**!** The product is labelled as fortified, **BUT it is not labelled** as “not a source of protein”.

**Silk Soy Beverage**  
All types & flavours are excluded, no deposit is charged.

# ⊗ Milk Alternatives — Fortified & Source of Protein

## FORTIFIED PLANT-BASED BEVERAGE

Beverage is a plant-based milk alternative.

Product's label must state that it is a **fortified beverage**, and it **must not have any warning about the beverage being “not a source of protein”**.

Plant-based milk alternatives that are fortified & a source of protein are excluded – no deposit is charged.



*The product is labelled as fortified, **BUT it is not labelled** as “not a source of protein”.*



### **Silk Protein Almond & Cashew**

*All types & flavours are excluded, no deposit is charged.*



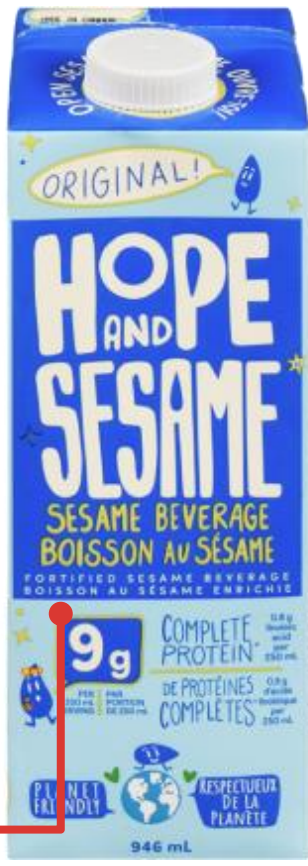
# Milk Alternatives — Fortified & Source of Protein

## FORTIFIED PLANT-BASED BEVERAGE

Beverage is a plant-based milk alternative.

Product's label must state that it is a **fortified beverage**, and it **must not have any warning about the beverage being “not a source of protein”**.

Plant-based milk alternatives that are fortified & a source of protein are excluded – no deposit is charged.



The product is labelled as fortified, **BUT it is not labelled** as “not a source of protein”.

**Hope And Sesame - Sesame Beverage**  
All types & flavours are excluded, no deposit is charged.

# ⊗ Milk Alternatives — Fortified & Source of Protein

## FORTIFIED PLANT-BASED BEVERAGE

Beverage is a plant-based milk alternative.

Product's label must state that it is a **fortified beverage**, and it **must not have any warning about the beverage being “not a source of protein”**.

Plant-based milk alternatives that are fortified & a source of protein are excluded – no deposit is charged.



The product is labelled as fortified, **BUT it is not labelled** as “not a source of protein”.

**YoFiit Miylk10 Chickpea & Flaxseed Beverage**  
All types & flavours are excluded, no deposit is charged.



# Sports & Diet/Nutritional Supplement vs. Meal Replacements, Formulated Liquid Diets & Infant Formula

## Product Examples

### HANDY TIP

Use the Search function in your PDF reader to look up various products by name.

Hit **"CTRL + F"** (Windows) or **"CMD + F"** (Mac) on your computer's keyboard to open the search box.



# Sports & Diet/Nutritional Supplement Drinks

# VS. Meal Replacements, Formulated Liquid Diets & Infant Formula

✔ **Now part of the program**  
Sports drinks — *like protein drinks, diet and nutritional supplement drinks, and electrolyte beverages* — now have a deposit.

✘ **Continues to be Excluded**  
Other popular diet type drinks, specifically meal replacements and formulated liquid diets continue to be excluded.  
No deposit charged for consumers.

**ON THE LABEL:**

- ★ Beverage is **NOT LABELLED** as a "Meal Replacement," a "Formulated Liquid Diet," or "Infant Formula."

**ON THE LABEL:**

- ★ Beverage is **LABELLED** as a "Meal Replacement."
- ★ Beverage is **LABELLED** as a "Formulated Liquid Diet."
- ★ Beverage is **LABELLED** as "Infant Formula."



✔ **Deposit Paid = Refundable**

✘ **No Deposit Paid = Non-Refundable**



**Sports & Diet/Nutritional Supplement** — *Example products now included in the program, i.e. refundable.*

**5-Hour** *Energy Drink*

**Abbott** *Ensure Complete Balanced Nutrition*

**Abbott** *Ensure — High Protein nutritional supplement*

**Abbott** *Nepro — Nutrition Shake, Therapeutic Nutrition*

**Abbott** *Jevity Nutritional Supplement — 1.0, 1.2, 1.5 CAL.*

**Abbott** *PediaSure — Pro Shake, SideKicks Shake, and Complete Grow & Gain*

**Abbott** *Pedialyte — Electrolyte Solution*

**Aloex** *Aloe Vera gel*

**Brüst** *Protein Coffee*

**Enfagrow** *A+ — Nutritional supplements for toddlers*

**Fruit of the Earth** *Aloe Vera juice*

**Gatorade** *Recover Protein Shake*

**Gatorade** *Sports drink*

**Greenhouse Juice** *Pick-Me-Up*

**Hydra** *Hydra+, Hydralyte — Electrolyte Solution*

**Kazein** *Protein Shake*

**Kirkland** *Complete Nutrition Shake*

**Lily of the desert** *Aloe Vera juice*

**Muscle Milk** *Protein Shake*

**Nestlé** *Boost — Soothe, Nutrition Complete, Diabetic, Simply+*

**Nestlé** *Novasource Renal*

**Nestlé** *NutriHep specialized nutrition*



**Sports & Diet/Nutritional Supplement** — *Example products now included in the program, i.e. refundable.*

[Nutricia](#) *KetoCal & KetoCal Multi Fiber*

[Nutricia](#) *Neocate Splash*

[Oasis NutriSolution](#) *Hydra+ Thickened Beverage*

[Premier](#) *Protein Drink*

[Recap](#) *Recovery*

[Six Star](#) *Clean Protein Shake*

[Vega](#) *Protein+ Shake*



**Meal Replacements, Formulated Liquid Diets & Infant Formula** — Example products that remain excluded from the program, i.e. non-refundable.

**Abbott** *Suplena Specialized Nutrition— formulated liquid diet*

**Abbott** *Vital Peptide*

**Carnation** *Breakfast Essentials*

**Good Start** *Plus – infant formula*

**Nestlé** *Boost Complete Nutrition Original— meal replacement*

**Nestlé** *Boost Complete Nutrition "Non-Creamy Nutrition Drink" — formulated liquid diet*

**Nestlé** *Boost Complete Nutrition "Plus Calories" — formulated liquid diet*

**Nestlé** *PediaSure Fibre — formulated liquid diet*

**Nestlé** *Peptamen — 1.0 & 1.5CAL (Calorically dense), AF 1.2, Junior & Junior 1.5*

**Nestlé** *ISOSOURCE — 1.2 & 1.5, 1.2 CAL & 1.5 CAL, Fibres 1.0 HP, Fibres 1.2 & 1.5*

**Oasis NutriSolution** *Meal Replacement*

**President's Choice** *Ultra Shake*

**Similac** *Pro-Advance*

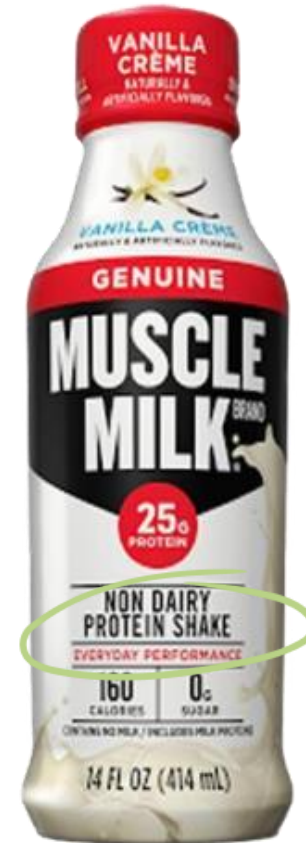
**SlimFast** *Original, Advanced Nutrition*



# Protein Shake — Non-Dairy or Isolated Milk Protein (Whey / Casein)

## NON-DAIRY PROTEIN SHAKE

Beverage is **not labelled as** a “Meal Replacement”, or a “Formulated Liquid Diet”.



### **Muscle Milk Protein Shake**

*All types & flavours included, a deposit is paid & can be refunded.*



# Protein Shake — Non-Dairy or Isolated Milk Protein (Whey / Casein)

## NON-DAIRY PROTEIN SHAKE

Beverage is **not labelled as** a “Meal Replacement”, or a “Formulated Liquid Diet”.



### **Vega Protein+ Shake**

*All flavours included, a deposit is paid & can be refunded.*



# Protein Shake — Non-Dairy or Isolated Milk Protein (Whey / Casein)

## WHEY OR CASEIN PROTEIN SHAKE

Beverage is **not labelled as** a “Meal Replacement”, or a “Formulated Liquid Diet”.



### ***Kaizen Protein Shake***

*All types & flavours included, a deposit is paid & can be refunded.*





# Protein Shake — Non-Dairy or Isolated Milk Protein (Whey / Casein)

## WHEY OR CASEIN PROTEIN SHAKE

Beverage is **not labelled as** a “Meal Replacement”, or a “Formulated Liquid Diet”.



### **Gatorade Recover Protein Shake**

*All flavours included, a deposit is paid & can be refunded.*



# Protein Shake & Nutritional Supplement

## PROTEIN SHAKE & NUTRITIONAL SUPPLEMENT

Beverage is **not labelled as** a “Meal Replacement”, or a “Formulated Liquid Diet”.



### **Premier Protein Drink**

*All flavours included, a deposit is paid & can be refunded.*



# Protein Shake & Nutritional Supplement

## PROTEIN BEVERAGE

Beverage is **not labelled as** a “Meal Replacement”, or a “Formulated Liquid Diet”.



### **Brüst Protein Coffee**

*All flavours included, a deposit is paid & can be refunded.*



# Protein Shake & Nutritional Supplement

## PROTEIN SHAKE & NUTRITIONAL SUPPLEMENT

Beverage is **not labelled as** a “Meal Replacement”, or a “Formulated Liquid Diet”.



***Abbott Ensure Complete, Balanced Nutrition — Nutritional Supplement***  
*For Regular, all flavours, a deposit is paid & can be refunded.*



# Protein Shake & Nutritional Supplement

## PROTEIN SHAKE & NUTRITIONAL SUPPLEMENT

Beverage is **not labelled as** a “Meal Replacement”, or a “Formulated Liquid Diet”.



**Abbott Ensure High Protein 50% Less Sugar — Nutritional Supplement**  
All flavours included, a deposit is paid & can be refunded.



# Protein Shake & Nutritional Supplement

## PROTEIN SHAKE & NUTRITIONAL SUPPLEMENT

Beverage is **not labelled as** a “Meal Replacement”, or a “Formulated Liquid Diet”.



### Six Star Clean Protein Shake

All flavours included, a deposit is paid & can be refunded.



# Diet & Nutritional Supplement / Shake

## DIET & NUTRITIONAL SUPPLEMENT / SHAKE

Beverage is **not labelled** as a “Meal Replacement”, or a “Formulated Liquid Diet”.



### **Kirkland Complete Nutrition Shake**

*All flavours included, a deposit is paid & can be refunded.*



# Diet & Nutritional Supplement / Shake

## DIET & NUTRITIONAL SUPPLEMENT / SHAKE

Beverage is not labelled as a “Meal Replacement”, or a “Formulated Liquid Diet”.



**Nestlé’s Boost Soothe – Clear Nutritional Drink**  
All flavours included, a deposit is paid & can be refunded.

**Nestlé’s Boost Complete Nutrition — Diabetic & Simply+**  
All flavours included, a deposit is paid & can be refunded.





# Diet & Nutritional Supplement / Shake

## DIET & NUTRITIONAL SUPPLEMENT / SHAKE

Beverage is **not labelled as** a “Meal Replacement”, or a “Formulated Liquid Diet”.

! *Nepro Nutritional Shake products are created to help meet the specialized nutrition needs of people on dialysis.*



### Abbott Nepro — Nutrition Shake

All flavours included, a deposit is paid & can be refunded.



# Diet & Nutritional Supplement / Shake

## DIET & NUTRITIONAL SUPPLEMENT / SHAKE

Beverage is **not labelled as** a “Meal Replacement”, or a “Formulated Liquid Diet”.



NUTRITIONALLY COMPLETE  
FORMULA FOR PATIENTS ON  
**DIALYSIS**



! *Novasource renal products are high calorie, high protein drink designed specifically for people on dialysis.*

### **Nestlé's Novasource Renal**

*All flavours included, a deposit is paid & can be refunded.*



# Diet & Nutritional Supplement / Shake

## DIET & NUTRITIONAL SUPPLEMENT / SHAKE

Beverage is **not labelled as** a “Meal Replacement”, or a “Formulated Liquid Diet”.

**KetoCal® products** are specifically designed to be used with the medical ketogenic diet for the dietary management of intractable epilepsy. They can be used as sole source of nutrition, as a snack or to create delicious recipes.



**Nutricia KetoCal — Ready-to-Feed Liquid Formula**  
All flavours included, a deposit is paid & can be refunded.



## Diet & Nutritional Supplement / Shake

### DIET & NUTRITIONAL SUPPLEMENT / SHAKE

Beverage is **not labelled as** a “Meal Replacement”, or a “Formulated Liquid Diet”.



***Nestlé's NutriHep Specialized Nutrition (Liquid Formula)***  
*All flavours included, a deposit is paid & can be refunded.*



# Diet & Nutritional Supplement / Shake

## DIET & NUTRITIONAL SUPPLEMENT / SHAKE

Beverage is **not labelled as** a “Meal Replacement”, or a “Formulated Liquid Diet”.



**Abbott's Jevity Nutritional Supplement (Liquid Formula)— 1.0, 1.2, 1.5 CAL**  
*All flavours included, a deposit is paid & can be refunded.*



# Diet & Nutritional Supplement / Shake

## DIET & NUTRITIONAL SUPPLEMENT / SHAKE

Beverage is **not labelled as** a “Meal Replacement”, or a “Formulated Liquid Diet”.



**Abbott's PediaSure — Pro Shake, SideKicks Shake, and Complete Grow & Gain**  
All flavours included, a deposit is paid & can be refunded.



# Diet & Nutritional Supplement / Shake

## DIET & NUTRITIONAL SUPPLEMENT / SHAKE

Beverage is **not labelled as** a “Meal Replacement”, or a “Formulated Liquid Diet”.



**Note** — Unlike other *Enfagrow* products, this is **not infant formula (which is excluded)**. It is a **ready-to-drink nutritional supplement**.

**Enfagrow A+ Nutritional Supplement for Toddlers**

All flavours included, a deposit is paid & can be refunded.



# Diet & Nutritional Supplement / Shake

## DIET & NUTRITIONAL SUPPLEMENT / SHAKE

Beverage is **not labelled as** a “Meal Replacement”, or a “Formulated Liquid Diet”.

A hypoallergenic ready-to-feed  
nutritionally complete elemental liquid  
Gluten- and casein-free  
for the dietary management of cow  
milk allergy, multiple food allergy

! Neocate Splash is a **ready-to-drink nutritional supplement** for individuals over 1 year of age.



### Nutricia — Neocate Splash

All flavours included, a deposit is paid & can be refunded.





## Sports / Electrolyte Beverages

### SPORTS / ELECTROLYTE BEVERAGES

Beverage is **not labelled as** a “Meal Replacement”, or a “Formulated Liquid Diet”.



**Gatorade**

*All flavours included, a deposit is paid & can be refunded.*



# Sports / Electrolyte Beverages

## SPORTS / ELECTROLYTE BEVERAGES

Beverage is **not labelled as** a “Meal Replacement”, or a “Formulated Liquid Diet”.



**Abbott Pedialyte —**  
*All flavours included, a deposit is paid & can be refunded.*



# Sports / Electrolyte Beverages

## SPORTS / ELECTROLYTE BEVERAGES

Beverage is **not labelled as** a “Meal Replacement”, or a “Formulated Liquid Diet”.



**Hydra+ and Hydralyte**  
All flavours included, a deposit is paid & can be refunded.



# Sports / Electrolyte Beverages

## SPORTS / ELECTROLYTE BEVERAGES

Beverage is **not labelled as** a “Meal Replacement”, or a “Formulated Liquid Diet”.



### **Recap Recovery**

*All flavours included, a deposit is paid & can be refunded.*



# Nutritional Thickened Beverages

## NUTRITIONAL THICKENED BEVERAGES

Beverage is **not labelled as** a “Meal Replacement”, or a “Formulated Liquid Diet”.

! Beverage is labelled as a thickened beverage made to help get nutrients to those with conditions such as dysphagia.



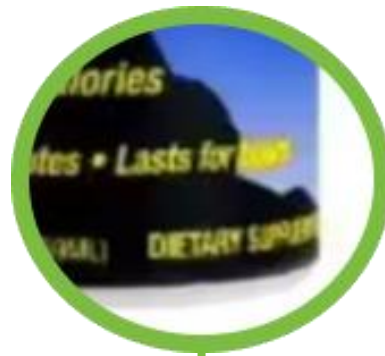
**Oasis NutriSolution Hydra + Thickened Beverage**  
All types & flavours included, a deposit is paid & can be refunded.



# Energy Drinks

## ENERGY DRINKS

Product **is not be labelled as** a “Meal Replacement”, or a “Formulated Liquid Diet”.



### **5-hour ENERGY**

*All types & flavours included, a deposit is paid & can be refunded.*



# Energy Drinks

## ENERGY DRINKS

Product **is not be labelled as** a “Meal Replacement”, or a “Formulated Liquid Diet”.



### **Greenhouse Juice Pick-Me-Up**

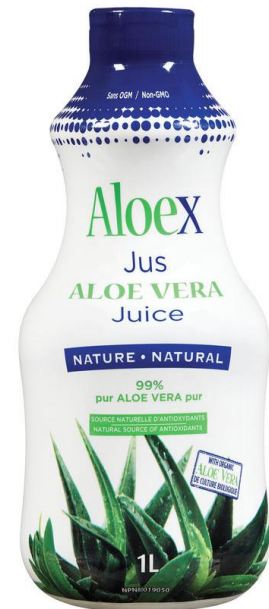
*All types & flavours included, a deposit is paid & can be refunded.*



# Aloe Vera — Juice & Drinkable Gels

## ALOE VERA BEVERAGES

Beverage is **not labelled as** a “Meal Replacement”, or a “Formulated Liquid Diet”.



### **Aloe Vera Juice & Drinkable Gel – \*Various brands**

*All types & flavours included, a deposit is paid & can be refunded.*

*\*Example brands include — Fruit of the Earth Aloe Vera juice, Lily of the desert Aloe Vera juice, and Aloex drinkable Aloe Vera gel.*



# Meal Replacement Beverages

## MEAL REPLACEMENT BEVERAGE

Beverage is labelled as a “Meal Replacement”.

Therefore no deposit was charged for the product, it is excluded from the program.



**Nestlé's Boost Complete Nutrition Meal Replacement**  
All flavours are excluded, no deposit is charged.



# Meal Replacement Beverage

## MEAL REPLACEMENT BEVERAGE

Beverage is labelled as a “Meal Replacement”.

Therefore no deposit was charged for the product, it is excluded from the program.



**President's Choice Nutri-Total Complete**  
*All flavours are excluded, no deposit is charged.*



**President's Choice Ultra Shake**  
*All flavours are excluded, no deposit is charged.*



# Meal Replacement Beverage

## MEAL REPLACEMENT BEVERAGE

Beverage is labelled as a “Meal Replacement”.

Therefore no deposit was charged for the product, it is excluded from the program.



### **Slim Fast Original**

*All flavours are excluded, no deposit is charged.*



### **Slim Fast Advanced Nutrition**

*All flavours are excluded, no deposit is charged.*



# Meal Replacement Beverage

## MEAL REPLACEMENT BEVERAGE

Beverage is labelled as a “Meal Replacement”.

Therefore no deposit was charged for the product, it is excluded from the program.



**Carnation Breakfast Essentials**  
All flavours are excluded, no deposit is charged.



# Meal Replacement Beverage

## MEAL REPLACEMENT BEVERAGE

Beverage is labelled as a “Meal Replacement”.

Therefore no deposit was charged for the product, it is excluded from the program.



### **Oasis NutriSolution**

*All flavours are excluded, no deposit is charged.*

# Formulated Liquid Diet Beverages

## FORMULATED LIQUID DIET BEVERAGE

Beverage is labelled as a “Formulated Liquid Diet”.

Therefore no deposit was charged for the product, it is excluded from the program.



**Nestlé's Boost Complete Nutrition — Non-Creamy Nutrition Drink**  
*All flavours are excluded, no deposit is charged.*

# Formulated Liquid Diet Beverages

## FORMULATED LIQUID DIET BEVERAGE

Beverage is labelled as a “Formulated Liquid Diet”.

Therefore no deposit was charged for the product, it is excluded from the program.



**Nestlé's Boost Complete Nutrition Formulated Liquid Diet**  
*All flavours are excluded, no deposit is charged.*

# Formulated Liquid Diet Beverages

## FORMULATED LIQUID DIET BEVERAGE

Beverage is labelled as a “Formulated Liquid Diet”.

Therefore no deposit was charged for the product, it is excluded from the program.



### **Abbott's PediaSure Fibre**

*All flavours are excluded, no deposit is charged.*





# Formulated Liquid Diet Beverages

## FORMULATED LIQUID DIET BEVERAGE

Beverage is labelled as a “Formulated Liquid Diet”.

Therefore no deposit was charged for the product, it is excluded from the program.



**Nestlé's Peptamen — Various Products**  
**1.0 & 1.5CAL (Calorically dense), AF 1.2, Junior & Junior 1.5**  
*All flavours are excluded, no deposit is charged.*

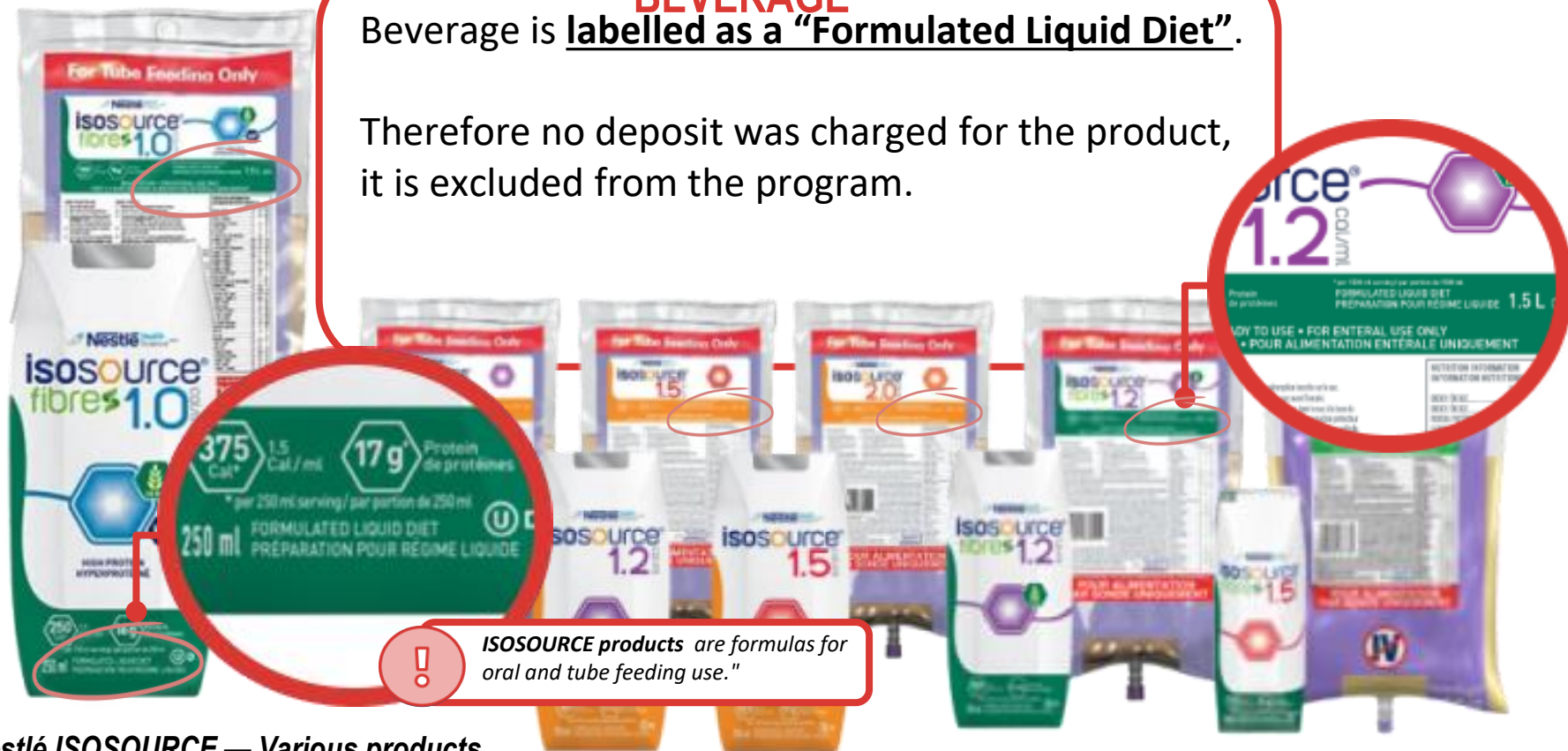


# Formulated Liquid Diet Beverages

## FORMULATED LIQUID DIET BEVERAGE

Beverage is labelled as a "Formulated Liquid Diet".

Therefore no deposit was charged for the product, it is excluded from the program.



### Nestlé ISOSOURCE — Various products

**1.2 & 1.5 , 1.2 CAL & 1.5 CAL (Calorically dense), Fibres 1.0 HP (High Protein), Fibres 1.2 & 1.5**

All flavours are excluded, no deposit is charged.

# Formulated Liquid Diet Beverages

## FORMULATED LIQUID DIET BEVERAGE

Beverage is labelled as a “Formulated Liquid Diet”.

Therefore no deposit was charged for the product, it is excluded from the program.



**Abbott's Suplena Formulated Liquid Diet**  
All flavours are excluded, no deposit is charged.



# Formulated Liquid Diet Beverages

## FORMULATED LIQUID DIET BEVERAGE

Beverage is labelled as a “Formulated Liquid Diet”.

Therefore no deposit was charged for the product is excluded from the program.



**Abbott's Vital Peptide**

*All flavours are excluded, no deposit is charged.*



# Infant Formula

## INFANT FORMULA

Beverage is labelled as “Infant Formula”.

Therefore no deposit was charged for the product, it is excluded from the program.



**Similac Pro-Advance**  
No deposit is charged.



# Infant Formula

## INFANT FORMULA

Beverage is labelled as “Infant Formula”.

Therefore no deposit was charged for the product, it is excluded from the program.



**Good Start Plus**  
No deposit is charged.

# Ready-to-Drink vs. Concentrated Beverages

## Product Examples



### **HANDY TIP**

Use the Search function in your PDF reader to look up various products by name.

Hit **"CTRL + F"** (Windows) or **"CMD + F"** (Mac) on your computer's keyboard to open the search box.

# Ready-to-Drink Beverages

VS.

# Concentrated Beverages



## Part of the program

Ready-to-drink beverages have a deposit.

### Some commonly confused products include:

- Black cold brew/iced coffee
- Ready-to-drink cocktail mixes  
(Alcohol can optionally be added, but the beverage can be consumed as-is)



**Deposit Paid = Refundable**



## Excluded

Concentrated beverages, which are meant to be mixed in/diluted before drinking, are excluded from the program.  
No deposit charged for consumers.

### Some commonly confused products include:

- Coffee creamers/enhancers
- Cereal cream
- Syrups
- Cocktail Syrups
- Condensed milk
- Frozen juices



**No Deposit Paid = Non-Refundable**





**Ready-to-Drink Beverages** — *Example products included in the program, i.e. refundable.*

President's Choice *Black Cold Brew Coffee*

Stök *Black Cold Brew Coffee*



**Concentrated Beverages** — Example products excluded from the program, i.e. non-refundable.

**International Delight** *Coffee Enhancer*

**Matteo's** *Coffee Syrups*

**Matteo's** *Cocktail Syrups*

**MiO** *Water Enhancer*

**Silk** *Plant-Based Coffee Creamer*

**SodaStream** *Drink Mix*

**Starbucks** *Coffee Enhancer*

**Starbucks** *Cold Brew Coffee Concentrate*



## Ready-to-Drink Beverage

### BLACK COLD BREW/ICED COFFEE

Beverage does not need to be mixed or diluted to be consumed.



**President's Choice Black Cold Brew Coffee**  
*A deposit is paid & can be refunded.*



## Ready-to-Drink Beverage

### BLACK COLD BREW/ICED COFFEE

Beverage does not need to be mixed or diluted to be consumed.



#### **Stök Black Cold Brew Coffee**

*For all flavours, a deposit is paid & can be refunded.*



# Concentrated Beverages

## COFFEE CREAMER/ENHANCER

Beverage is concentrated and meant to be mixed in/diluted before drinking.

Therefore no deposit was charged for the product, it is excluded from the program.



***International Delight Coffee Creamer***  
*All flavours are excluded, no deposit is charged.*

# Concentrated Beverages

## COFFEE CREAMER/ENHANCER

Beverage is concentrated and meant to be mixed in/diluted before drinking.

Therefore no deposit was charged for the product, it is excluded from the program.



### **Starbucks Coffee Enhancer**

*All flavours are excluded, no deposit is charged.*

# Concentrated Beverages

## COFFEE CREAMER/ENHANCER

Beverage is concentrated and meant to be mixed in/diluted before drinking.

Therefore no deposit was charged for the product, it is excluded from the program.



### **Silk Coffee Creamer**

*All flavours are excluded, no deposit is charged.*

# Concentrated Beverages

## COFFEE SYRUP

Beverage is concentrated and meant to be mixed in/diluted before drinking.

Therefore no deposit was charged for the product, it is excluded from the program.



### **Matteo's Coffee Syrups**

*All flavours are excluded, no deposit is charged.*



# Concentrated Beverages

## COLD BREW COFFEE CONCENTRATE

Beverage is concentrated and meant to be diluted before drinking.

Therefore no deposit was charged for the product, it is excluded from the program.



**Starbucks Cold Brew Coffee Concentrate**  
*No deposit is charged.*



# Concentrated Beverages

## COCKTAIL SYRUP

Beverage is concentrated and meant to be mixed in/diluted before drinking.

Therefore no deposit was charged for the product, it is excluded from the program.



**Matteo's Cocktail Syrups**  
All flavours are excluded, no deposit is charged.



# Concentrated Beverages

## WATER ENHANCER

Beverage is concentrated and meant to be mixed in/diluted before drinking.

Therefore no deposit was charged for the product, it is excluded from the program.



### ***MiO's water enhancers***

*All flavours are excluded, no deposit is charged.*



# Concentrated Beverages

## DRINK MIX

Beverage is concentrated and meant to be mixed in/diluted before drinking.

Therefore no deposit was charged for the product, it is excluded from the program.



### **SodaStream Drink Mix**

*All flavours are excluded, no deposit is charged.*

# Other Commonly Confused Products

## **HANDY TIP**

Use the Search function in your PDF reader to look up various products by name.

Hit **"CTRL + F" (Windows)** or **"CMD + F" (Mac)** on your computer's keyboard to open the search box.





**Other Confused Products** — *Example products included in the program, i.e. refundable.*

Compliments *Tomato Juice*

Dole *Pineapple Juice*

Heinz *Tomato Juice*

Twisted Shotz *Alcohol Beverages*



**Other Confused Products** — *Example products excluded from the program, i.e. non-refundable.*

**Cooking Wine** *Chateau Thierry, Rooster, etc.*

**Lemon Juice** *ReaLemon, Great Value, Lemon Tree, Suntree, etc.*

**Lime juice** *ReaLime, Compliments, Suntree, etc.*

**Cooking Oil** *Great Value, Saporito, Compliments, Bertolli, etc.*

**Vinegar** *Allen's, Compliments, Bragg, Kikkoman, Liv, etc.*

**Canned Soup** *Campbell's, Habitant, Compliments, Tim Hortons, etc.*

**Food Pouches** *lögo, Compliments, Materne, etc.*



## Other Confused Products

### CANNED JUICE

While these products look similar to canned food, these are BEVERAGES.



**Compliments Tomato Juice**  
*A deposit is paid & can be refunded.*





## Other Confused Products

### CANNED JUICE

While these products look similar to canned food, these are BEVERAGES.



#### **Heinz Tomato Juice**

*A deposit is paid & can be refunded.*



## Other Confused Products

### CANNED JUICE

While these products look similar to canned food, these are BEVERAGES.



### **Dole Pineapple Juice**

*A deposit is paid & can be refunded.*

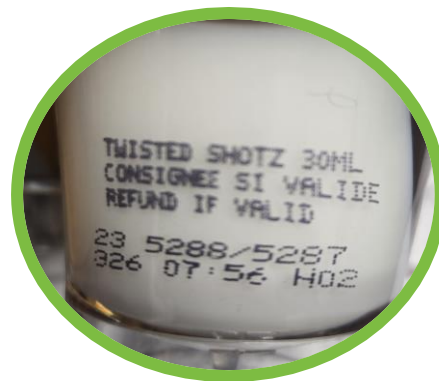


# Other Confused Products

## SMALL ALCOHOL BEVERAGE CONTAINERS

These small containers do not look like standard beverage containers, but they are still deposit-bearing.

These beverage containers can be identified as deposit-bearing by the label on the side of the container (shown below).



### **Twisted Shotz**

*For all flavours, a deposit is paid & can be refunded.*



# Other Confused Products

## COOKING WINES

Although similar to wine that you would drink, this product is not intended to be consumed as a beverage.

Therefore no deposit was charged for the product, it is excluded from the program.





# Other Confused Products

## LEMON JUICE

Even though this is labelled as juice, this product is not intended to be consumed as a beverage.

Therefore no deposit was charged for the product, it is excluded from the program.





# Other Confused Products

## LIME JUICE

Even though this is labelled as juice, this product is not intended to be consumed as a beverage.

Therefore no deposit was charged for the product, it is excluded from the program.





# Other Confused Products

## COOKING OIL

Product is not intended to be consumed as a beverage.

Therefore no deposit was charged for the product, it is excluded from the program.





# Other Confused Products

## VINEGAR

Product is not intended to be consumed as a beverage.

Therefore no deposit was charged for the product, it is excluded from the program.





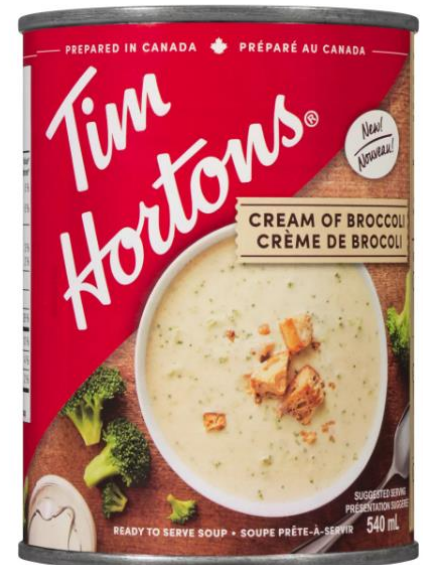


# Other Confused Products

## CANNED SOUP

While these products look similar to canned beverages, these products are FOOD and not intended to be consumed as a beverage.

Therefore no deposit was charged for the product, it is excluded from the program.



# Other Confused Products

## FOOD POUCHES

While these products can be similar to drink pouches, and can be consumed in a way similar to drinking, these products are FOOD and NOT BEVERAGES.

Therefore no deposit was charged for the product, it is excluded from the program.

