

# SEARCHABLE REFERENCE TOOL

## Examples of Commonly Confused Products

*New Brunswick Beverage Containers Program*

### HANDY TIP



Use the Search function in your PDF reader to look up various products by name.

**Hit “CTRL + F” (Windows) or “CMD + F” (Mac)**  
on your computer’s keyboard to open the search box.

# Changes to Exclusion Policy

## New Brunswick Beverage Containers Program

Since April 1, 2020, many beverage containers that used to be excluded from the New Brunswick Beverage Containers Program (BCP) are now deposit-bearing.

Consumers are now charged a deposit fee on many new beverage containers such as beverages with dairy, certain plant-based beverages and sports drinks.

This guide highlights some of the new products that became deposit-bearing within each category since 2020. This document is intended to be a handy reference tool for redemption centres and it will continue to be updated on a regular basis.

### PRODUCT NOT LISTED?

**This document is by no means an all-inclusive list.** If you are unsure about a certain beverage product, send us a photo ([info@encorpatl.ca](mailto:info@encorpatl.ca)) and we will respond as well as include the product as an example in this document.



# Table of Contents

**Beverages with Dairy vs. Milk**

[page 4](#)

**Milk Alternatives: Fortified Plant-Based Beverages —  
Not a Source of Protein & Unfortified Plant-Based Beverages vs.  
Fortified Plant-Based Beverages Source of Protein**

[page 38](#)

**Sports Drinks vs. Meal Replacements & Liquid Diets**

[page 66](#)



# Beverages with Dairy vs. Real Milk

## Product Examples

### HANDY TIP

Use the Search function in your PDF reader to look up various products by name.

Hit **"CTRL + F" (Windows)** or **"CMD + F" (Mac)** on your computer's keyboard to open the search box.





# Beverages with Dairy

## VS.

# Real Milk



### Now part of the program

Milk shakes, milk protein shakes, drinkable yogurt, drinkable kefir, eggnog, iced coffee/tea drinks and other beverages made with dairy now have a deposit.

### ON THE LABEL:

- ★ Beverage contains dairy. Milk is listed among the ingredients.
- ★ BUT the **beverage is NOT LABELLED** as real milk.



### Continues to be Excluded

Real milk (cow/goat) – even if flavoured – continues to be excluded.  
No deposit is charged for consumers.

### ON THE LABEL:

- ★ Beverage is **labelled as real milk.**
- ★ **Cow's milk, i.e. — Low-Fat/Skim Milk (0% M.F.), Partly Skimmed Milk (1%, 2% M.F.), Whole/Homogenized Milk (3.25% M.F.);**
- ★ **Goat milk;**
- ★ **Can be flavoured milk (ex: chocolate, strawberry, banana, etc);**



**Deposit Paid = Refundable**



**No Deposit Paid = Non-Refundable**





## **Beverages with Dairy** — *Example products now included in the program, i.e. refundable.*

**Activia** *Shot Probiotic Drink* [p.18](#)

**Bio-K** *Plus & Kidz Probiotic — dairy culture, fermented rice, fermented soy, etc.* [p.22](#)

**Bolthouse Farms** *Coffee & Tea Beverages* [p.25](#)

**Danino** *Drinkable Yogurt* [p.16](#)

**Fairlife** *Core Power — High Protein Milk Shake* [p.13](#)

**Good Mood Farm** *Kefir* [p.20](#)

**Hershey's** *Milk Shake* [p.10](#)

**IÖGO nanö** *Drinkable Yogurt* [p.17](#)

**Liberté** *Kefir* [p.19](#)

**Lifeway** *Kefir* [p.21](#)

**Milk2Go Sport** *Milk Protein Shake, PRO Milk Protein Shake* [p.14](#)

**Neilson** *Milkshake* [p. 8](#)

**Neilson** *Eggnog* [p.26](#)

**Nestlé** *Milkshake* [p.9](#)

**Nestlé** *Nesquik "Flavoured Milk Beverage"* [p.12](#)

**Northumberland** *Eggnog* [p.27](#)

**President's Choice** *Eggnog* [p.28](#)

**Real Shake** *Milkshake* [p.11](#)

**Starbucks** *Frappuccino & other coffee beverages* [p.23](#)

**Tim Hortons** *Iced Coffee, Iced Capp & other coffee beverages* [p.24](#)

**YOP** *Drinkable Yogurt* [p.15](#)



## **Real Milk** — Example products that remain excluded from the program, i.e. non-refundable.

<b>Baxter</b> <i>Milk products — 0%, 1%, 2%, 3.25%, etc.</i>	<a href="#">p.30</a>
<b>JOYYA</b> <i>Ultrafiltered milk products — 0%, 1%, 2%, 3.25%, etc.</i>	<a href="#">p.32</a>
<b>Liberté</b> <i>Goat's milk</i>	<a href="#">p.31</a>
<b>Milk 2 Go</b> <i>Partly-skimmed milk (1% and 2% ) with artificial flavouring</i>	<a href="#">p.36</a>
<b>Milk 2 Go</b> <i>1% M.F. chai tea partly-skimmed milk &amp; 1% M.F. iced coffee partly-skimmed milk</i>	<a href="#">p.37</a>
<b>Natrel</b> <i>Fine-filtered milk products — 0%, 1%, 2%</i>	<a href="#">p.33</a>
<b>Natrel</b> <i>Lactose-free ultrafiltered milk products — 0%, 1%</i>	<a href="#">p.34</a>
<b>Northumberland</b> <i>Milk products — 0% 1%, 2% regular &amp; chocolate, 3.25%, etc</i>	<a href="#">p.29</a>
<b>Northumberland</b> <i>Milk on the Moove — 1% and 2% M.F. partly-skimmed milk with flavouring</i>	<a href="#">p.35</a>



# Beverages with Dairy — Milkshakes

## MILKSHAKE

Beverage is **NOT LABELLED as real milk.**

Dairy is only included as part of the ingredient list.



### **Neilson Milkshake — Various Flavours**

*French Vanilla, Strawberry, Caramilk, Crispy Crunch, Mr. Big .*

*Various flavours included, a deposit is paid & can be refunded.*



# Beverages with Dairy — Milkshakes

## MILKSHAKE

Beverage is **NOT LABELLED** as real milk.

Dairy is only included as part of the ingredient list.



### **Nestlé Milk Shake — Various Flavours**

*Oh Henry, Coffee Crisp, Rolo.*

*Various flavours included, a deposit is paid & can be refunded.*



# Beverages with Dairy — Milkshakes

## MILKSHAKE

Beverage is **NOT LABELLED as real milk.**

Dairy is only included as part of the ingredient list.



**Hershey's Milk Shake — Various Flavours**  
Creamy Chocolate, Cookies'n'Creme, Double Chocolate.

*Various flavours included, a deposit is paid & can be refunded.*





# Beverages with Dairy — Milkshakes

## MILKSHAKE

Beverage is **NOT LABELLED as real milk.**

Dairy is only included as part of the ingredient list.



### **Real Shake**

*All flavours included, a deposit is paid & can be refunded.*



# Beverages with Dairy

## FLAVOURED MILK BEVERAGES

Beverage is **NOT LABELLED** as real **milk**.

Dairy is only included as part of the ingredient list.



**Nestlé Nesquik — Flavoured Milk Beverage**

*All flavours included, a deposit is paid & can be refunded.*





# Beverages with Dairy — Milk Protein Shake

## MILK PROTEIN SHAKE

Beverage is **NOT LABELLED** as **real milk**.

Dairy is only included as part of the ingredient list.



**Fairlife Core Power High Protein Milk Shake**

*All flavours included, a deposit is paid & can be refunded.*



# Beverages with Dairy — Milk Protein Shake

## MILK PROTEIN SHAKE

Beverage is **NOT LABELLED** as real milk.

Dairy is only included as part of the ingredient list.



**Milk 2 Go Sport Milk Protein Shake**

*All flavours included, a deposit is paid & can be refunded.*



**Milk 2 Go Sport PRO Milk Protein Shake**

*All flavours included, a deposit is paid & can be refunded.*



# Beverages with Dairy — Drinkable Yogurt

## DRINKABLE YOGURT

Beverage is **NOT LABELLED** as real milk.

Dairy is only included as part of the ingredient list.



### **YOP Drinkable Yogurt**

*All types & flavours included, a deposit is paid & can be refunded.*



# Beverages with Dairy — Drinkable Yogurt

## DRINKABLE YOGURT

Beverage is **NOT LABELLED** as real milk.

Dairy is only included as part of the ingredient list.



### ***Danino Drinkable Yogurt***

*All types & flavours included, a deposit is paid & can be refunded.*



# Beverages with Dairy — Drinkable Yogurt

## DRINKABLE YOGURT

Beverage is **NOT LABELLED** as real milk.

Dairy is only included as part of the ingredient list.



***IÖGO nanö Drinkable Yogurt***

*All types & flavours included, a deposit is paid & can be refunded.*



# Beverages with Dairy — Drinkable Yogurt

## DRINKABLE YOGURT

Beverage is **NOT LABELLED as real milk.**

Dairy is only included as part of the ingredient list.



### **Activia Shot Probiotic Drink**

*All flavours included, a deposit is paid & can be refunded.*





# Beverages with Dairy — Fermented Milk

## FERMENTED MILK — KEFIR

Beverage is **NOT LABELLED** as real milk.

Dairy is only included as part of the ingredient list. *Kefir is made with fermented milk.*



**Liberté Kefir**

*All flavours included, a deposit is paid & can be refunded.*



# Beverages with Dairy — Fermented Milk

## FERMENTED MILK — KEFIR

Beverage is **NOT LABELLED** as real milk.

Dairy is only included as part of the ingredient list. *Kefir is made with fermented milk.*



### **Good Mood Farm Kefir**

*All flavours included, a deposit is paid & can be refunded.*





# Beverages with Dairy — Fermented Milk

## FERMENTED MILK — KEFIR

Beverage is **NOT LABELLED** as real milk.

Dairy is only included as part of the ingredient list. *Kefir is made with fermented milk.*



***Lifeway Kéfir***

*All flavours included, a deposit is paid & can be refunded.*



# Beverages with Dairy — Fermented Milk

## FERMENTED MILK

Beverage is **NOT LABELLED** as real milk.

Dairy is only included as part of the ingredient list. *Kefir is made with fermented milk.*



**Bio-K Plus and Bio-K Kidz**

*All flavours included, a deposit is paid & can be refunded.*



# Beverages with Dairy — Coffee & Tea Beverages

## COFFEE & TEA BEVERAGES

Beverage is **NOT LABELLED as real milk.**

Dairy is only included as part of the ingredient list.



### **Starbucks Coffee Beverages**

*All flavours included, a deposit is paid & can be refunded.*



# Beverages with Dairy — Coffee & Tea Beverages

## COFFEE & TEA BEVERAGES

Beverage is **NOT LABELLED as real milk.**

Dairy is only included as part of the ingredient list.



**Tim Hortons — Iced Capp & Iced Coffee Beverages**  
All types & flavours included, a deposit is paid & can be refunded.



# Beverages with Dairy — Coffee & Tea Beverages

## COFFEE & TEA BEVERAGES

Beverage is **NOT LABELLED** as real milk.

Dairy is only included as part of the ingredient list.



**Bolthouse Farms — Coffee & Tea Beverages**

*All types & flavours included, a deposit is paid & can be refunded.*



# Beverages with Dairy — Eggnog

## EGGNOG

Beverage is **NOT LABELLED as real milk.**

Dairy is only included as part of the ingredient list.



### ***Neilson Eggnog***

*All flavours included, a deposit is paid & can be refunded.*





# Beverages with Dairy — Eggnog

## EGGNOG

Beverage is **NOT LABELLED as real milk.**

Dairy is only included as part of the ingredient list.



### ***Northumberland Eggnog***

*All flavours included, a deposit is paid & can be refunded.*



# Beverages with Dairy — Eggnog

## EGGNOG

Beverage is **NOT LABELLED as real milk.**

Dairy is only included as part of the ingredient list.



### ***President's Choice Eggnog***

*All flavours included, a deposit is paid & can be refunded.*





# Labelled as Real Milk — Cow's Milk

## COW'S MILK

Beverage is **labelled as 'milk'**, i.e. —  
*ultra-filtered milk, low fat/skim milk (0% M.F.),  
partly skimmed milk (1% M.F., 2% M.F.),  
or whole / homogenized milk (3.25% M.F.)*

Cow's milk is considered **an essential nutritional product.**



### **Cow's Milk— \*All brands**

*Northumberland Milk products (0%, 1%, 2% regular & chocolate, 3.25%, etc).*

*All types & flavours are excluded, no deposit is charged.*



# Labelled as Real Milk — Cow's Milk

## COW'S MILK

Beverage is **labelled as 'milk'**, i.e. —  
*ultra-filtered milk, low fat/skim milk (0% M.F.),  
partly skimmed milk (1% M.F., 2% M.F.),  
or whole / homogenized milk (3.25% M.F.)*

Cow's milk is considered **an essential nutritional product.**



### **Cow's Milk— \*All brands**

Baxter Milk products (0%, 1%, 2%, 3.25%, etc.).

*All types & flavours are excluded, no deposit is charged.*



# Labelled as Real Milk — Goat's Milk

## GOAT'S MILK

Beverage is **labelled as 'milk'**, i.e. —  
*ultra-filtered milk, low fat/skim milk (0% M.F.),  
partly skimmed milk (1% M.F., 2% M.F.),  
or whole / homogenized milk (3.25% M.F.)*

Goat's milk is considered **an essential nutritional product.**



### Goat's Milk— \*All brands

Example products include, but not limited to: Liberté Goat Milk (3.25%).

All types & flavours are excluded, no deposit is charged.



# Labelled as Real Milk — Filtered Milk

## FILTERED MILK

Beverage is **labelled as 'milk'**, i.e. —  
*ultra-filtered milk, low fat/skim milk (0% M.F.),  
partly skimmed milk (1% M.F., 2% M.F.),  
or whole / homogenized milk (3.25% M.F.)*

Cow's milk, including ultra-filtered, is considered  
**an essential nutritional product.**



### JOYYA's Ultrafiltered Milk Products

Example — Ultrafiltered skim milk (0%), Ultrafiltered partly skimmed 2% milk,  
Ultrafiltered partly skimmed 2% chocolate milk, Ultrafiltered 3.25% milk.

All types & flavours are excluded, no deposit is charged.



# Labelled as Real Milk — Filtered Milk

## FILTERED MILK

Beverage is **labelled as 'milk'**, i.e. —  
*ultra-filtered milk, low fat/skim milk (0% M.F.),  
partly skimmed milk (1% M.F., 2% M.F.),  
or whole / homogenized milk (3.25% M.F.)*

Cow's milk, including fine-filtered, is considered **an essential nutritional product.**



### **Natrel's Fine Filtered Milk Products**

Example — Fine-filtered skim milk (0%), Fine-filtered 1% milk, Fine-filtered 2% milk.

*All types & flavours are excluded, no deposit is charged.*





# Labelled as Real Milk — Lactose-free Milk

## LACTOSE-FREE MILK

Beverage is **labelled as 'milk'**, i.e. —  
*ultra-filtered milk, low fat/skim milk (0% M.F.),  
partly skimmed milk (1% M.F., 2% M.F.),  
or whole / homogenized milk (3.25% M.F.)*

Lactose-free cow's milk is considered **an essential nutritional product.**



### Natrel's Lactose-free Milk Products — All flavours

Example — Lactose-free ultrafiltered skim milk (0%), Lactose-free ultrafiltered partly-skimmed chocolate milk (1%).

All types & flavours are excluded, no deposit is charged.



# Labelled as Real Milk — Flavoured Cow's Milk

## FLAVOURED COW'S MILK

Beverage is **labelled as 'milk'**, i.e. —  
*ultra-filtered milk, low fat/skim milk (0% M.F.),  
partly skimmed milk (1% M.F., 2% M.F.),  
or whole / homogenized milk (3.25% M.F.)*

Cow's milk, including flavoured milk, is considered **an essential nutritional product.**



**Milk on the Moove Partly-skimmed Milk (1% and 2% )**

*All types & flavours are excluded, no deposit is charged.*



# Labelled as Real Milk — Flavoured Cow's Milk

## FLAVOURED COW'S MILK

Beverage is **labelled as 'milk'**, i.e. —  
*ultra-filtered milk, low fat/skim milk (0% M.F.),  
partly skimmed milk (1% M.F., 2% M.F.),  
or whole / homogenized milk (3.25% M.F.)*

Cow's milk, including flavoured milk, is considered **an essential nutritional product.**



**Milk 2 Go Partly-skimmed Milk (1% and 2%)**

*All types & flavours are excluded, no deposit is charged.*







# Labelled as Real Milk — Caffeinated 1% Milk

## CAFFEINATED 1% MILK

Beverage is **labelled as 'milk'**, i.e. —  
*ultra-filtered milk, low fat/skim milk (0% M.F.),  
partly skimmed milk (1% M.F., 2% M.F.),  
or whole / homogenized milk (3.25% M.F.)*

Cow's milk, including flavoured milk, is considered **an essential nutritional product.**



**\*\* Although these may look like a coffee or tea drink, these beverages are real milk with an added flavour.**



**Milk 2 Go — 1% M.F. Iced Chai Tea Latte & 1% M.F. Iced Coffee**  
Each beverage is labeled as “partly skimmed milk (1% M.F.)”.

*The products are excluded, no deposit is charged.*

# Plant-Based Milk Product Alternatives

## Product Examples

### HANDY TIP

Use the Search function in your PDF reader to look up various products by name.

Hit **"CTRL + F" (Windows)** or **"CMD + F" (Mac)** on your computer's keyboard to open the search box.



# Unfortified OR NOT a Source of Protein

# VS.

# Fortified & A Source of Protein

## ✓ Now part of the program

Most Plant-based beverages now have a deposit. Those labelled as "fortified" have a deposit ONLY IF the warning "not a source of protein" is also on the label.

### ON THE LABEL:

- ★ Beverage is **NOT LABELLED** as "fortified"  
- OR -
- ★ Includes a **warning that the beverage is "Not a Source of Protein"**.  
- OR -
- ★ Beverage is **labelled as BOTH "fortified" and "Not a Source of Protein"**.

## ✓ Deposit Paid = Refundable

## ✗ Continues to be Excluded

Plant-based beverages that are labelled as "fortified" and considered a source of protein continue to be excluded.  
No deposit charged for consumers.

### ON THE LABEL:

- ★ Must state beverage is **"fortified"**.
- ★ **Must NOT have a warning** about the beverage being "Not a Source of Protein".

## ✗ No Deposit Paid = Non-Refundable





## Plant-based Milk Product Alternatives — Example products now included in the program, i.e. refundable.

<b>Blue Diamond</b> <i>Almond Breeze</i>	<a href="#"><u>p.46</u></a>
<b>Bolthouse Farms</b> <i>Dairy-free plant milk beverage</i>	<a href="#"><u>p.59</u></a>
<b>Califia Farms</b> <i>Almond Beverage</i>	<a href="#"><u>p.50</u></a>
<b>Coconut Dream</b> <i>Coconut Beverage</i>	<a href="#"><u>p.55</u></a>
<b>Earth's Own</b> <i>So Fresh — Cashew Beverage</i>	<a href="#"><u>p.42</u></a>
<b>Earth's Own</b> <i>So Fresh &amp; So Nice — Almond Beverage</i>	<a href="#"><u>p.44</u></a>
<b>Earth's Own</b> <i>So Fresh — Oat Beverage</i>	<a href="#"><u>p.51</u></a>
<b>Kirkland</b> <i>Almond Beverage</i>	<a href="#"><u>p.47</u></a>
<b>Natura</b> <i>Almond Beverage</i>	<a href="#"><u>p.49</u></a>
<b>Natura</b> <i>Rice Beverage</i>	<a href="#"><u>p.52</u></a>
<b>President's Choice</b> <i>Organics — Almond Beverage</i>	<a href="#"><u>p.48</u></a>
<b>Rice Dream</b> <i>Rice Beverage</i>	<a href="#"><u>p.53</u></a>
<b>Ripple</b> <i>Plant-based milk beverage</i>	<a href="#"><u>p.58</u></a>
<b>Silk</b> <i>Cashew Beverage</i>	<a href="#"><u>p.43</u></a>
<b>Silk</b> <i>Almond Beverage</i>	<a href="#"><u>p.45</u></a>
<b>Silk</b> <i>Coconut Beverage</i>	<a href="#"><u>p.56</u></a>
<b>So Delicious</b> <i>Coconut Beverage — original, holiday nog</i>	<a href="#"><u>p.54</u></a>
<b>Sproud</b> <i>Plant-based beverage</i>	<a href="#"><u>p.60</u></a>
<b>Veggemo</b> <i>Veggie-based non-dairy beverage</i>	<a href="#"><u>p.57</u></a>



## Plant-based Milk Product Alternatives — Example products that remain excluded from the program, i.e. non-refundable.

<b>Hope and Sesame</b> <i>Sesame Beverage</i>	<a href="#">p.64</a>
<b>Natura</b> <i>Organic Soy Beverage</i>	<a href="#">p.61</a>
<b>Silk</b> <i>Organic Soy Beverage</i>	<a href="#">p.63</a>
<b>Silk</b> <i>Protein — Almond &amp; Cashew Beverage</i>	<a href="#">p.63</a>
<b>YoFiit</b> <i>Miylk10 — Chickpea &amp; Flaxseed Beverage</i>	<a href="#">p.65</a>

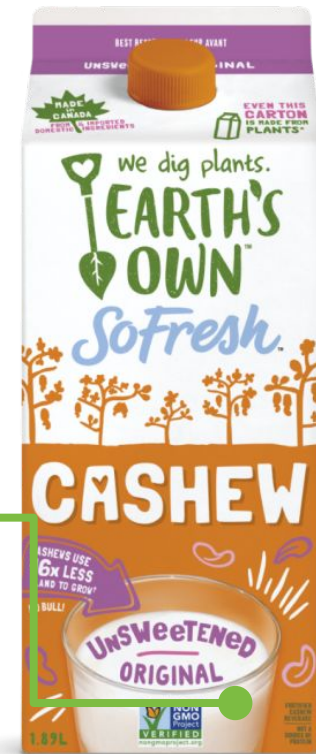


# Milk Alternatives — Fortified Cashew Beverage

## FORTIFIED CASHEW BEVERAGE

Beverage is a nut-based milk alternative.

Product's label clearly states that it is both a **fortified beverage & not a source of protein.**



**Earth's Own So Fresh — Cashew Beverage**  
*All Flavours included, a deposit is paid & can be refunded.*





# Milk Alternatives — Fortified Cashew Beverage

## FORTIFIED CASHEW BEVERAGE

Beverage is a nut-based milk alternative.

Product's label clearly states that it is both a **fortified beverage & not a source of protein.**



### **Silk — Cashew Beverage**

*All flavours included, a deposit is paid & can be refunded.*



# Milk Alternatives — Fortified Almond Beverage

## FORTIFIED ALMOND BEVERAGE

Beverage is a nut-based milk alternative.

Product's label clearly states that it is both a **fortified beverage & not a source of protein.**



**Earth's Own So Nice — Almond Beverage**  
*All flavours included, a deposit is paid & can be refunded.*

**Earth's Own So Fresh — Almond Beverage**  
*All flavours included, a deposit is paid & can be refunded.*



# Milk Alternatives — Fortified Almond Beverage

## FORTIFIED ALMOND BEVERAGE

Beverage is a nut-based milk alternative.

Product's label clearly states that it is both a **fortified beverage & not a source of protein.**



### ***Silk — Almond Beverage***

*All flavours included, a deposit is paid & can be refunded.*



# Milk Alternatives — Fortified Almond Beverage

## FORTIFIED ALMOND BEVERAGE

Beverage is a nut-based milk alternative.

Product's label clearly states that it is both a **fortified beverage & not a source of protein.**



**Blue Diamond — Almond Breeze Beverage**  
*All flavours included, a deposit is paid & can be refunded.*





# Milk Alternatives — Fortified Almond Beverage

## FORTIFIED ALMOND BEVERAGE

Beverage is a nut-based milk alternative.

Product's label clearly states that it is both a **fortified beverage & not a source of protein.**



***Kirkland — Fortified Almond Beverage***

*All flavours included, a deposit is paid & can be refunded.*



# Milk Alternatives — Fortified Almond Beverage

## FORTIFIED ALMOND BEVERAGE

Beverage is a nut-based milk alternative.

Product's label clearly states that it is both a **fortified beverage & not a source of protein.**



### **PC Organics — Almond Beverage**

*All flavours included, a deposit is paid & can be refunded.*





# Milk Alternatives — Fortified Almond Beverage

## FORTIFIED ALMOND BEVERAGE

Beverage is a nut-based milk alternative.

Product's label clearly states that it is both a **fortified beverage & not a source of protein.**



**Natura — Almond Beverage**

*All flavours included, a deposit is paid & can be refunded.*



# Milk Alternatives — Unfortified Almond Beverage

## UNFORTIFIED ALMOND BEVERAGE

Beverage is a nut-based milk alternative, which is **not fortified**.

**All unfortified plant-based beverages** have a deposit.



The product **is not labelled** as “fortified”.



**Califia Farms — Almond Beverage**

*All flavours included, a deposit is paid & can be refunded.*



# Milk Alternatives — Fortified Oat Beverage

## FORTIFIED OAT BEVERAGE

Beverage is a plant-based milk alternative.

Product's label clearly states that it is both a **fortified beverage & not a source of protein.**



**Earth's Own So Fresh — Oat Beverage**

*All flavours included, a deposit is paid & can be refunded.*



# Milk Alternatives — Fortified Rice Beverage

## FORTIFIED RICE BEVERAGE

Beverage is a plant-based milk alternative.

Product's label clearly states that it is both a **fortified beverage & not a source of protein.**



### **Natura — Rice Beverage**

*All flavours included, a deposit is paid & can be refunded.*



# Milk Alternatives — Fortified Rice Beverage

## FORTIFIED RICE BEVERAGE

Beverage is a plant-based milk alternative.

Product's label clearly states that it is both a **fortified beverage & not a source of protein.**



**Rice Dream — Rice Beverage**

*All flavours included, a deposit is paid & can be refunded.*



# Milk Alternatives — Unfortified Coconut Beverage

## UNFORTIFIED COCONUT BEVERAGE

Beverage is a plant-based milk alternative, which is **not fortified**.

**All unfortified plant-based beverages** have a deposit.



The product **is not labelled as “fortified”**.

**So Delicious — Coconut Beverage**

*All flavours included, a deposit is paid & can be refunded.*





# Milk Alternatives — Unfortified Coconut Beverage

## UNFORTIFIED COCONUT BEVERAGE

Beverage is a plant-based milk alternative, which is **not fortified**.

**All unfortified plant-based beverages** have a deposit.



The product **is not labelled as “fortified”**.

### **Coconut Dream Beverage**

*All flavours included, a deposit is paid & can be refunded.*



# Milk Alternatives — Fortified Coconut Beverage

## FORTIFIED COCONUT BEVERAGE

Beverage is a plant-based milk alternative.

Product's label clearly states that it is both a **fortified beverage & not a source of protein.**



### ***Silk — Coconut Beverage***

*All flavours included, a deposit is paid & can be refunded.*

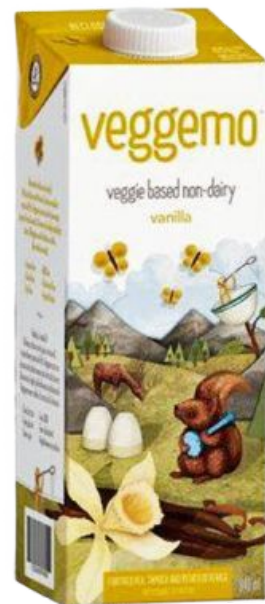
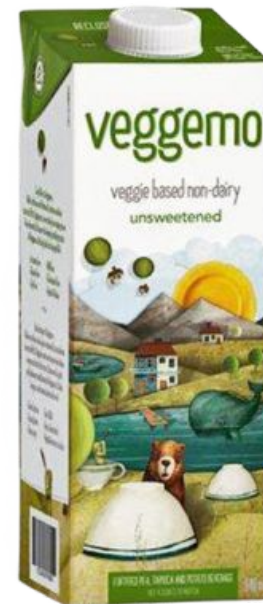
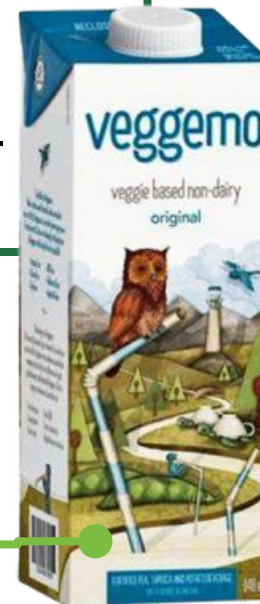


# Milk Alternatives — Fortified Plant-based Beverage

## FORTIFIED PLANT-BASED BEVERAGE

Beverage is a plant-based milk alternative.

Product's label clearly states that it is both a **fortified beverage & not a source of protein.**



***Veggemo — Veggie Based Non-Dairy Beverage***

*All flavours included, a deposit is paid & can be refunded.*



# Milk Alternatives — Unfortified Plant-based Beverage

## UNFORTIFIED PLANT-BASED BEVERAGE

Beverage is a plant-based milk alternative, which is **not fortified**.

**All unfortified plant-based beverages** have a deposit.



The product **is not labelled as “fortified”**.

**Ripple — Dairy-Free Plant Based Milk**

*All flavours included, a deposit is paid & can be refunded.*



# Milk Alternatives — Unfortified Plant-based Beverage

## UNFORTIFIED PLANT-BASED BEVERAGE

Beverage is a plant-based milk alternative, which is **not fortified**.

**All unfortified plant-based beverages** have a deposit.



! The product **is not labelled** as “fortified”.

***Bolthouse Farms — Dairy-Free Plant Milk Protein Beverage***

*All flavours included, a deposit is paid & can be refunded.*





# Milk Alternatives — Unfortified Plant-based Beverage

## UNFORTIFIED PLANT-BASED BEVERAGE

Beverage is a plant-based milk alternative, which is **not fortified**.

**All unfortified plant-based beverages** have a deposit.



The product **is not labelled** as “fortified”.

### ***Sproud — Plant-Based Beverage***

*All types & flavours included, a deposit is paid & can be refunded.*





# Milk Alternatives — Fortified & Source of Protein

## FORTIFIED SOY BEVERAGE

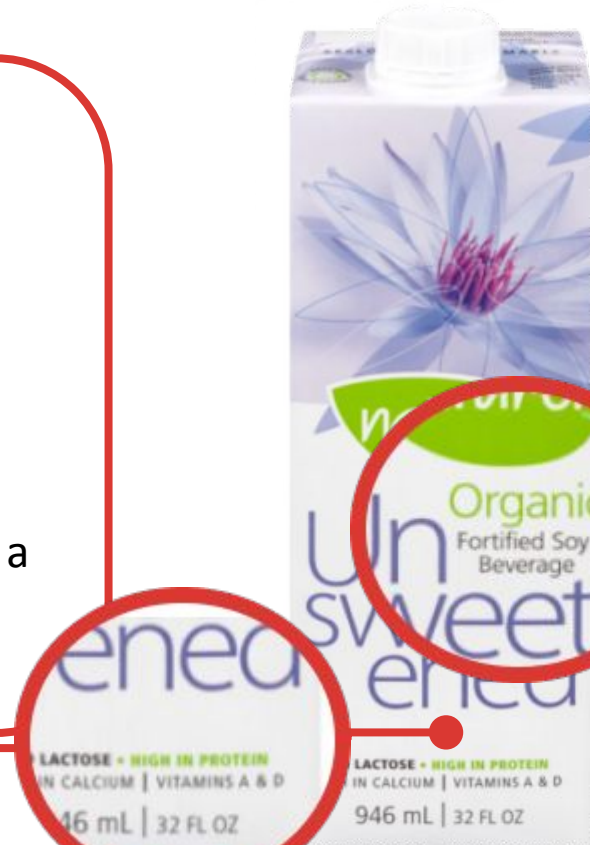
Beverage is a plant-based milk alternative.

Product's label must state that it is a **fortified beverage**, and it **must not have any warning about the beverage being “not a source of protein”**.

Plant-based milk alternatives that are fortified & a source of protein are excluded – no deposit is charged.



*The product is labelled as fortified, **BUT it is not labelled** as “not a source of protein”.*



**Natura Organic Soy Beverage**

*All types & flavours are excluded, no deposit is charged.*



# Milk Alternatives — Fortified & Source of Protein

## FORTIFIED SOY BEVERAGE

Beverage is a plant-based milk alternative.

Product's label must state that it is a **fortified beverage**, and it **must not have any warning about the beverage being “not a source of protein”**.

Plant-based milk alternatives that are fortified & a source of protein are excluded – no deposit is charged.



The product is labelled as fortified, **BUT it is not labelled as “not a source of protein”**.

### Silk Soy Beverage

All types & flavours are excluded, no deposit is charged.



# Milk Alternatives — Fortified & Source of Protein

## FORTIFIED PLANT-BASED BEVERAGE

Beverage is a plant-based milk alternative.

Product's label must state that it is a **fortified beverage**, and it **must not have any warning about the beverage being “not a source of protein”**.

Plant-based milk alternatives that are fortified & a source of protein are excluded – no deposit is charged.



*The product is labelled as fortified, **BUT it is not labelled as “not a source of protein”**.*



**Silk Protein Almond & Cashew**

*All types & flavours are excluded, no deposit is charged.*



# Milk Alternatives — Fortified & Source of Protein

## FORTIFIED PLANT-BASED BEVERAGE

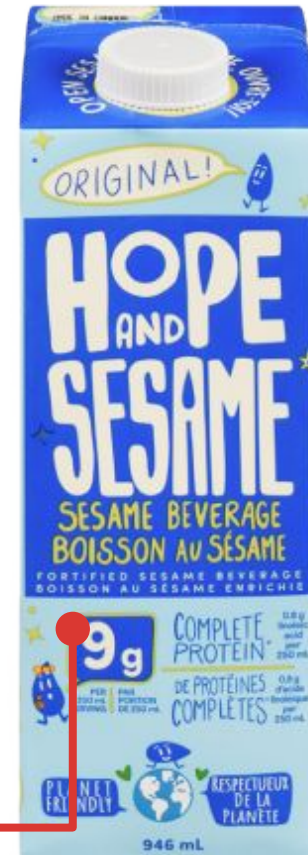
Beverage is a plant-based milk alternative.

Product's label must state that it is a **fortified beverage**, and it **must not have any warning about the beverage being “not a source of protein”**.

Plant-based milk alternatives that are fortified & a source of protein are excluded – no deposit is charged.



The product is labelled as fortified, **BUT it is not labelled as “not a source of protein”**.



**Hope And Sesame - Sesame Beverage**

All types & flavours are excluded, no deposit is charged.



# Milk Alternatives — Fortified & Source of Protein

## FORTIFIED PLANT-BASED BEVERAGE

Beverage is a plant-based milk alternative.

Product's label must state that it is a **fortified beverage**, and it **must not have any warning about the beverage being “not a source of protein”**.

Plant-based milk alternatives that are fortified & a source of protein are excluded – no deposit is charged.



The product is labelled as fortified, **BUT it is not labelled as “not a source of protein”**.

**YoFiit MiyLk10 Chickpea & Flaxseed Beverage**  
All types & flavours are excluded, no deposit is charged.

# Sports & Diet/Nutritional Supplement vs. Meal Replacements & Formulated Liquid Diets

## Product Examples

### HANDY TIP

Use the Search function in your PDF reader to look up various products by name.

Hit **"CTRL + F" (Windows)** or **"CMD + F" (Mac)** on your computer's keyboard to open the search box.





# Sports & Diet/Nutritional Supplement Drinks

# VS.

# Meal Replacements & Formulated Liquid Diets



## Now part of the program

Sports drinks — like *protein drinks, diet and nutritional supplement drinks, and electrolyte beverages* — now have a deposit.

### ON THE LABEL:

- ★ Beverage is **NOT LABELLED** as a "Meal Replacement" or a "Formulated Liquid Diet".



## Continues to be Excluded

Other popular diet type drinks, specifically meal replacements and formulated liquid diets continue to be excluded.  
No deposit charged for consumers.

### ON THE LABEL:

- ★ Beverage is **LABELLED** as a "Meal Replacement".
- ★ Beverage is **LABELLED** as a "Formulated Liquid Diet".



**Deposit Paid = Refundable**



**No Deposit Paid = Non-Refundable**



**Sports & Diet/Nutritional Supplement** — *Example products now included in the program, i.e. refundable.*

<b>5-Hour</b>	<i>Energy Drink</i>	<a href="#">p.91</a>
<b>Abbott</b>	<i>Ensure — High Protein nutritional supplement</i>	<a href="#">p.75</a>
<b>Abbott</b>	<i>Nepro — Nutrion Shake, Therapeutic Nutrition</i>	<a href="#">p.79</a>
<b>Abbott</b>	<i>Jevity Nutritional Supplement — 1.0, 1.2, 1.5 CAL.</i>	<a href="#">p.83</a>
<b>Abbott</b>	<i>PediaSure — Pro Shake, SideKicks Shake, and Complete Grow &amp; Gain</i>	<a href="#">p.84</a>
<b>Abbott</b>	<i>Pedialyte — Electrolyte Solution</i>	<a href="#">p.88</a>
<b>Aloex</b>	<i>Aloe Vera gel</i>	<a href="#">p.92</a>
<b>Enfagrow</b>	<i>A+ — Nutritional supplements for toddlers</i>	<a href="#">p.85</a>
<b>Fruit of the Earth</b>	<i>Aloe Vera juice</i>	<a href="#">p.92</a>
<b>Gatorade</b>	<i>Recover Protein Shake</i>	<a href="#">p.73</a>
<b>Gatorade</b>	<i>Sports drink</i>	<a href="#">p.87</a>
<b>Hydra</b>	<i>Hydra+, Hydralyte — Electrolyte Solution</i>	<a href="#">p.89</a>
<b>Kazein</b>	<i>Protein Shake</i>	<a href="#">p.72</a>
<b>Kirkland</b>	<i>Complete Nutrition Shake</i>	<a href="#">p.77</a>
<b>Lily of the desert</b>	<i>Aloe Vera juice</i>	<a href="#">p.92</a>
<b>Muscle Milk</b>	<i>Protein Shake</i>	<a href="#">p.70</a>
<b>Nestlé</b>	<i>Boost — Soothe, Nutrition Complete, Diabetic, Simply+</i>	<a href="#">p.78</a>
<b>Nestlé</b>	<i>Novasource Renal</i>	<a href="#">p.80</a>
<b>Nestlé</b>	<i>NutriHep specialized nutrition</i>	<a href="#">p.82</a>
<b>Nutricia</b>	<i>KetoCal &amp; KetoCal Multi Fiber</i>	<a href="#">p.81</a>
<b>Nutricia</b>	<i>Neocate Splash</i>	<a href="#">p.86</a>
<b>Oasis NutriSolution</b>	<i>Hydra+ Thickened Beverage</i>	<a href="#">p.90</a>
<b>Premier</b>	<i>Protein Drink</i>	<a href="#">p.74</a>
<b>Six Star</b>	<i>Clean Protein Shake</i>	<a href="#">p.76</a>
<b>Vega</b>	<i>Protein+ Shake</i>	<a href="#">p.72</a>



## Meal Replacements & Formulated Liquid Diets — Example products that remain excluded from the program, i.e. non-refundable.

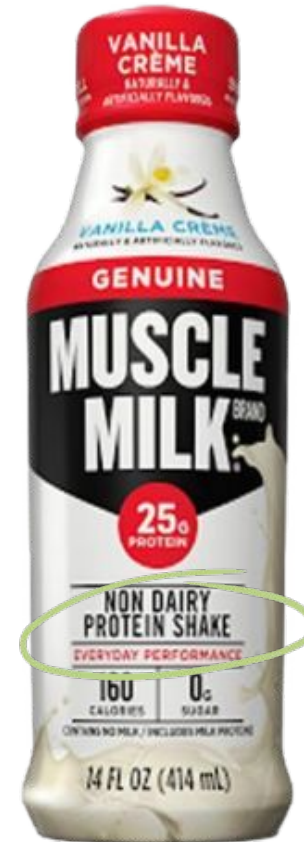
<b>Abbott</b> <i>Ensure Complete Balanced Nutrition</i>	<a href="#">p.94</a>
<b>Abbott</b> <i>Suplena Specialized Nutrition— formulated liquid diet</i>	<a href="#">p.104</a>
<b>Abbott</b> <i>Vital Peptide</i>	<a href="#">p.105</a>
<b>Carnation</b> <i>Breakfast Essentials</i>	<a href="#">p.97</a>
<b>Nestlé</b> <i>Boost Complete Nutrition Original— meal replacement</i>	<a href="#">p.93</a>
<b>Nestlé</b> <i>Boost Complete Nutrition "Non-Creamy Nutrition Drink" — formulated liquid diet</i>	<a href="#">p.99</a>
<b>Nestlé</b> <i>Boost Complete Nutrition "Plus Calories" — formulated liquid diet</i>	<a href="#">p.100</a>
<b>Nestlé</b> <i>PediaSure Fibre — formulated liquid diet</i>	<a href="#">p.101</a>
<b>Nestlé</b> <i>Peptamen — 1.0 &amp; 1.5CAL (Calorically dense), AF 1.2, Junior &amp; Junior 1.5</i>	<a href="#">p.102</a>
<b>Nestlé</b> <i>ISOSOURCE —1.2 &amp; 1.5 , 1.2 CAL &amp; 1.5 CAL, Fibres 1.0 HP, Fibres 1.2 &amp; 1.5</i>	<a href="#">p.103</a>
<b>Oasis NutriSolution</b> <i>Meal Replacement</i>	<a href="#">p.98</a>
<b>President's Choice</b> <i>Ultra Shake</i>	<a href="#">p.95</a>
<b>SlimFast</b> <i>Original, Advanced Nutrition</i>	<a href="#">p.96</a>



# Protein Shake — Non-Dairy or Isolated Milk Protein (Whey / Casein)

## NON-DAIRY PROTEIN SHAKE

Beverage is **not labelled as** a “Meal Replacement”, or a “Formulated Liquid Diet”.



### **Muscle Milk Protein Shake**

*All types & flavours included, a deposit is paid & can be refunded.*



# Protein Shake — Non-Dairy or Isolated Milk Protein (Whey / Casein)

## NON-DAIRY PROTEIN SHAKE

Beverage is **not labelled as** a “Meal Replacement”, or a “Formulated Liquid Diet”.



### ***Vega Protein+ Shake***

*All flavours included, a deposit is paid & can be refunded.*



# Protein Shake — Non-Dairy or Isolated Milk Protein (Whey / Casein)

## WHEY OR CASEIN PROTEIN SHAKE

Beverage is **not labelled as** a “Meal Replacement”, or a “Formulated Liquid Diet”.



### ***Kaizen Protein Shake***

*All types & flavours included, a deposit is paid & can be refunded.*





# Protein Shake — Non-Dairy or Isolated Milk Protein (Whey / Casein)

## WHEY OR CASEIN PROTEIN SHAKE

Beverage is **not labelled as** a “Meal Replacement”, or a “Formulated Liquid Diet”.



### **Gatorade Recover Protein Shake**

*All flavours included, a deposit is paid & can be refunded.*



# Protein Shake & Nutritional Supplement

## PROTEIN SHAKE & NUTRITIONAL SUPPLEMENT

Beverage is **not labelled as** a “Meal Replacement”, or a “Formulated Liquid Diet”.



### **Premier Protein Drink**

*All flavours included, a deposit is paid & can be refunded.*



# Protein Shake & Nutritional Supplement

## PROTEIN SHAKE & NUTRITIONAL SUPPLEMENT

Beverage is **not labelled as** a “Meal Replacement”, or a “Formulated Liquid Diet”.



**Abbott Ensure High Protein 50% Less Sugar — Nutritional Supplement**  
All flavours included, a deposit is paid & can be refunded.



# Protein Shake & Nutritional Supplement

## PROTEIN SHAKE & NUTRITIONAL SUPPLEMENT

Beverage is **not labelled as** a “Meal Replacement”, or a “Formulated Liquid Diet”.



### **Six Star Clean Protein Shake**

*All flavours included, a deposit is paid & can be refunded.*



# Diet & Nutritional Supplement / Shake

## DIET & NUTRITIONAL SUPPLEMENT / SHAKE

Beverage is **not labelled as** a “Meal Replacement”, or a “Formulated Liquid Diet”.



### **Kirkland Complete Nutrition Shake**

*All flavours included, a deposit is paid & can be refunded.*





# Diet & Nutritional Supplement / Shake

## DIET & NUTRITIONAL SUPPLEMENT / SHAKE

Beverage is **not labelled as** a “Meal Replacement”, or a “Formulated Liquid Diet”.



**Nestlé's Boost Soothe – Clear Nutritional Drink**  
All flavours included, a deposit is paid & can be refunded.

**Nestlé's Boost Complete Nutrition — Diabetic & Simply+**  
All flavours included, a deposit is paid & can be refunded.





# Diet & Nutritional Supplement / Shake

## DIET & NUTRITIONAL SUPPLEMENT / SHAKE

Beverage is **not labelled as** a “Meal Replacement”, or a “Formulated Liquid Diet”.



**Nepro Nutritional Shake products** are created to help meet the specialized nutrition needs of people on dialysis.



### Abbott Nepro — Nutrition Shake

All flavours included, a deposit is paid & can be refunded.



# Diet & Nutritional Supplement / Shake

## DIET & NUTRITIONAL SUPPLEMENT / SHAKE

Beverage is **not labelled as** a “Meal Replacement”, or a “Formulated Liquid Diet”.



NUTRITIONALLY COMPLETE  
FORMULA FOR PATIENTS ON  
**DIALYSIS**

! **Novasource renal products** are high calorie, high protein drink designed specifically for people on dialysis.



**Nestlé's Novasource Renal**

*All flavours included, a deposit is paid & can be refunded.*



# Diet & Nutritional Supplement / Shake

## DIET & NUTRITIONAL SUPPLEMENT / SHAKE

Beverage is **not labelled as** a “Meal Replacement”, or a “Formulated Liquid Diet”.

**KetoCal® products** are specifically designed to be used with the medical ketogenic diet for the dietary management of intractable epilepsy. They can be used as sole source of nutrition, as a snack or to create delicious recipes.



**Nutricia KetoCal — Ready-to-Feed Liquid Formula**

*All flavours included, a deposit is paid & can be refunded.*



## Diet & Nutritional Supplement / Shake

### DIET & NUTRITIONAL SUPPLEMENT / SHAKE

Beverage is **not labelled as** a “Meal Replacement”, or a “Formulated Liquid Diet”.



***Nestlé's NutriHep Specialized Nutrition (Liquid Formula)***  
*All flavours included, a deposit is paid & can be refunded.*





# Diet & Nutritional Supplement / Shake

## DIET & NUTRITIONAL SUPPLEMENT / SHAKE

Beverage is **not labelled as** a “Meal Replacement”, or a “Formulated Liquid Diet”.



**Abbott's Jevity Nutritional Supplement (Liquid Formula)— 1.0, 1.2, 1.5 CAL**  
All flavours included, a deposit is paid & can be refunded.



# Diet & Nutritional Supplement / Shake

## DIET & NUTRITIONAL SUPPLEMENT / SHAKE

Beverage is **not labelled as** a “Meal Replacement”, or a “Formulated Liquid Diet”.



**Abbott's PediaSure — Pro Shake, SideKicks Shake, and Complete Grow & Gain**  
*All flavours included, a deposit is paid & can be refunded.*





# Diet & Nutritional Supplement / Shake

## DIET & NUTRITIONAL SUPPLEMENT / SHAKE

Beverage is **not labelled as** a “Meal Replacement”, or a “Formulated Liquid Diet”.



**Note** — Unlike other *Enfagrow* products, this is **not infant formula (which is excluded)**. It is a **ready-to-drink nutritional supplement**.

***Enfagrow A+ Nutritional Supplement for Toddlers***

*All flavours included, a deposit is paid & can be refunded.*



# Diet & Nutritional Supplement / Shake

## DIET & NUTRITIONAL SUPPLEMENT / SHAKE

Beverage is **not labelled as** a “Meal Replacement”, or a “Formulated Liquid Diet”.



Neocate Splash is a **ready-to-drink nutritional supplement** for individuals over 1 year of age.



### Nutricia — Neocate Splash

All flavours included, a deposit is paid & can be refunded.



## Sports / Electrolyte Beverages

### SPORTS / ELECTROLYTE BEVERAGES

Beverage is **not labelled as** a “Meal Replacement”, or a “Formulated Liquid Diet”.



**Gatorade**

*All flavours included, a deposit is paid & can be refunded.*



# Sports / Electrolyte Beverages

## SPORTS / ELECTROLYTE BEVERAGES

Beverage is **not labelled as** a “Meal Replacement”, or a “Formulated Liquid Diet”.



**Abbott Pedialyte —**

*All flavours included, a deposit is paid & can be refunded.*





# Sports / Electrolyte Beverages

## SPORTS / ELECTROLYTE BEVERAGES

Beverage is **not labelled as** a “Meal Replacement”, or a “Formulated Liquid Diet”.



### **Hydra+ and Hydralyte**

*All flavours included, a deposit is paid & can be refunded.*



# Nutritional Thickened Beverages

## NUTRITIONAL THICKENED BEVERAGES

Beverage is **not labelled as** a “Meal Replacement”, or a “Formulated Liquid Diet”.



*Beverage is labelled as a thickened beverage made to help get nutrients to those with conditions such as dysphagia.*



***Oasis NutriSolution Hydra + Thickened Beverage***  
*All types & flavours included, a deposit is paid & can be refunded.*





# Energy Drinks

## ENERGY DRINKS

Product **is not be labelled as** a “Meal Replacement”, or a “Formulated Liquid Diet”.



### 5-hour ENERGY

*All types & flavours included, a deposit is paid & can be refunded.*



# Aloe Vera — Juice & Drinkable Gels

## ALOE VERA BEVERAGES

Beverage is **not labelled as** a “Meal Replacement”, or a “Formulated Liquid Diet”.



### **Aloe Vera Juice & Drinkable Gel – \*Various brands**

*All types & flavours included, a deposit is paid & can be refunded.*

*\*Example brands include — Fruit of the Earth Aloe Vera juice, Lily of the desert Aloe Vera juice, and Aloex drinkable Aloe Vera gel.*



# Meal Replacement Beverages

## MEAL REPLACEMENT BEVERAGE

Beverage is **labelled as a “Meal Replacement”**.

Therefore no deposit was charged for the product, it is excluded from the program.



**Nestlé's Boost Complete Nutrition Meal Replacement**  
All flavours are excluded, no deposit is charged.



# Meal Replacement Beverage

## MEAL REPLACEMENT BEVERAGE

Beverage is **labelled** as a “Meal Replacement”.

Therefore no deposit was charged for the product, it is excluded from the program.



**Abbott Ensure — Complete Balanced Nutrition**

*All flavours are excluded, no deposit is charged.*





# Meal Replacement Beverage

## MEAL REPLACEMENT BEVERAGE

Beverage is labelled as a “Meal Replacement”.

Therefore no deposit was charged for the product, it is excluded from the program.



**President's Choice Nutri-Total Complete**  
All flavours are excluded, no deposit is charged.



**President's Choice Ultra Shake**  
All flavours are excluded, no deposit is charged.



# Meal Replacement Beverage

## MEAL REPLACEMENT BEVERAGE

Beverage is labelled as a “Meal Replacement”.

Therefore no deposit was charged for the product, it is excluded from the program.



### **Slim Fast Original**

*All flavours are excluded, no deposit is charged.*



### **Slim Fast Advanced Nutrition**

*All flavours are excluded, no deposit is charged.*





# Meal Replacement Beverage

## MEAL REPLACEMENT BEVERAGE

Beverage is **labelled** as a “Meal Replacement”.

Therefore no deposit was charged for the product, it is excluded from the program.



**Carnation Breakfast Essentials**

*All flavours are excluded, no deposit is charged.*



# Meal Replacement Beverage

## MEAL REPLACEMENT BEVERAGE

Beverage is **labelled** as a “Meal Replacement”.

Therefore no deposit was charged for the product, it is excluded from the program.



### **Oasis NutriSolution**

*All flavours are excluded, no deposit is charged.*



# Formulated Liquid Diet Beverages

## FORMULATED LIQUID DIET BEVERAGE

Beverage is **labelled as a “Formulated Liquid Diet”**.

Therefore no deposit was charged for the product, it is excluded from the program.



**Nestlé's Boost Complete Nutrition — Non-Creamy Nutrition Drink**

*All flavours are excluded, no deposit is charged.*



# Formulated Liquid Diet Beverages

## FORMULATED LIQUID DIET BEVERAGE

Beverage is labelled as a “Formulated Liquid Diet”.

Therefore no deposit was charged for the product, it is excluded from the program.



**Nestlé's Boost Complete Nutrition Formulated Liquid Diet**

*All flavours are excluded, no deposit is charged.*





# Formulated Liquid Diet Beverages

## FORMULATED LIQUID DIET BEVERAGE

Beverage is **labelled as a “Formulated Liquid Diet”**.

Therefore no deposit was charged for the product, it is excluded from the program.



### **Abbott's PediaSure Fibre**

*All flavours are excluded, no deposit is charged.*





# Formulated Liquid Diet Beverages

## FORMULATED LIQUID DIET BEVERAGE

Beverage is labelled as a “**Formulated Liquid Diet**”.

Therefore no deposit was charged for the product, it is excluded from the program.



### Nestlé's Peptamen — Various Products

1.0 & 1.5CAL (Calorically dense), AF 1.2, Junior & Junior 1.5

All flavours are excluded, no deposit is charged.

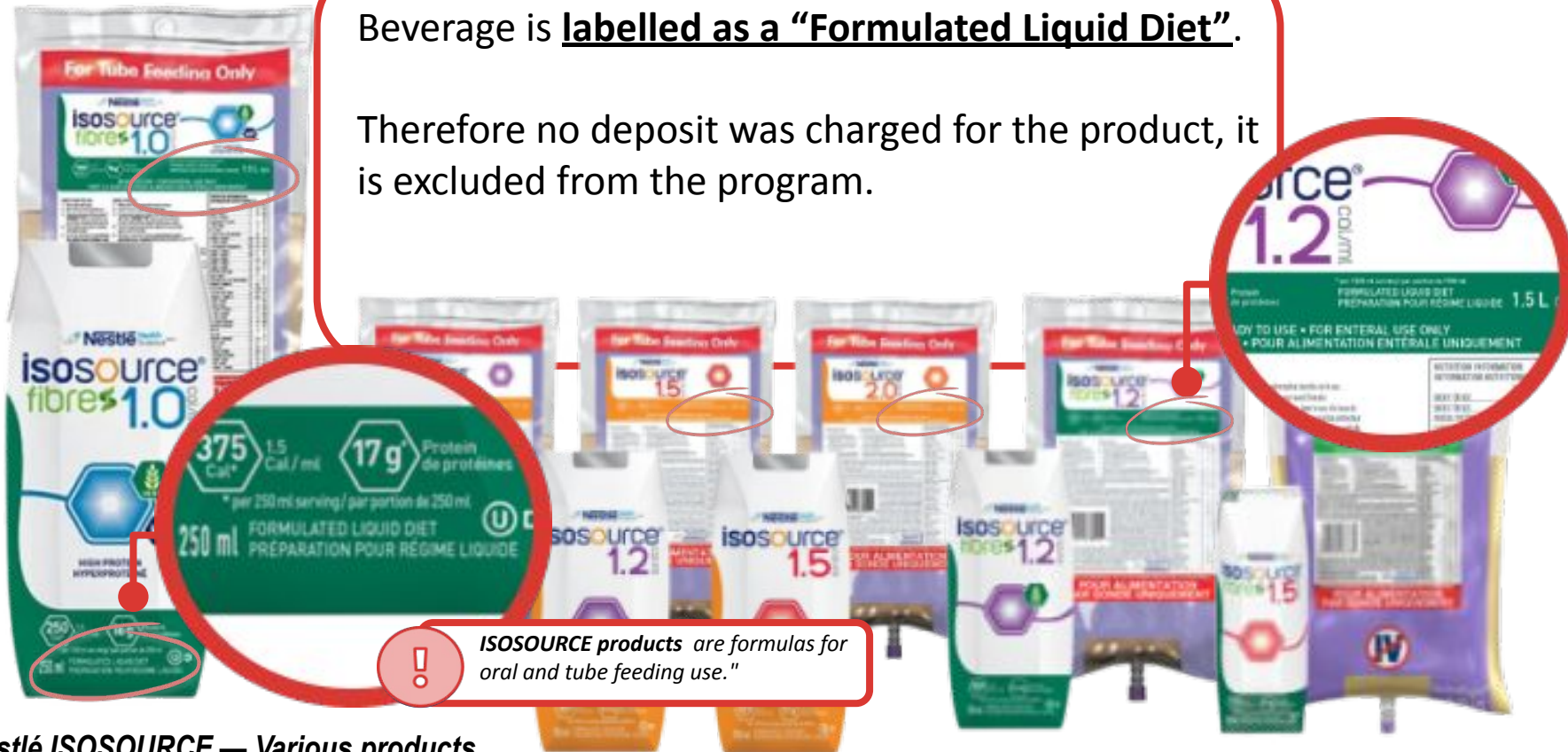


# Formulated Liquid Diet Beverages

## FORMULATED LIQUID DIET BEVERAGE

Beverage is labelled as a “Formulated Liquid Diet”.

Therefore no deposit was charged for the product, it is excluded from the program.



**Nestlé ISOSOURCE — Various products**

**1.2 & 1.5 , 1.2 CAL & 1.5 CAL (Calorically dense), Fibres 1.0 HP (High Protein), Fibres 1.2 & 1.5**

*All flavours are excluded, no deposit is charged.*



# Formulated Liquid Diet Beverages

## FORMULATED LIQUID DIET BEVERAGE

Beverage is **labelled as a “Formulated Liquid Diet”**.

Therefore no deposit was charged for the product, it is excluded from the program.



**Abbott's Suplena Formulated Liquid Diet**  
All flavours are excluded, no deposit is charged.



# Formulated Liquid Diet Beverages

## FORMULATED LIQUID DIET BEVERAGE

Beverage is **labelled as a “Formulated Liquid Diet”**.

Therefore no deposit was charged for the product, is excluded from the program.



**Abbott's Vital Peptide**

*All flavours are excluded, no deposit is charged.*