

# HOW TO PROPERLY SORT AND BULK NON-GLASS BEVERAGE CONTAINERS

- Bulk bags are to be used for storing and shipping deposit-bearing non-glass beverage containers.
- Bulk bags should not be overfilled or underfilled.
- An Encorp tag must be securely attached to each bulk bag with the appropriate information filled out. (Use your Encorp printer to print and stick your label on the tag or write in the information by hand with clear/legible handwriting.)

Drivers follow instructions provided by Encorp, and are advised not to pick up:

- Bags that are not Encorp bulk bags.
- Bulk bags that are not tagged with an Encorp tag.
- Bulk bags that are unreasonably overfilled or underfilled.

(NON-ALCOHOL)		SORT
ALUMINUM CANS		1
(ALCOHOL)		SORT
ALUMINUM SMALL	+	15
ALUMINUM LARGE		16

Share same bulk bag.

encorp re RECYCLE	
CENTRE #	BC 00-00
SORT # TRI #	QTY QTE
15	1750
16	50



Fill to approx. 1,800 containers (+/- 100).  
Attach completed tag to black handle.  
Properly close bag.

(NON-ALCOHOL)		SORT
PET / HDPE (Translucent)		3
GABLE TOP / TETRA		5
OTHER PLASTICS / POUCHES / HDPE (Pigmented)		6
STEEL CANS		8



Fill to the line.  
Attach completed tag to black handle.  
Properly close bag.  
Put sort #8 bulk bags on a pallet.

(ALCOHOL)		SORT
PLASTIC / POUCHES SMALL	+	23
PLASTIC / POUCHES LARGE		24
WINE BOX / TETRA SMALL	+	25
WINE BOX / TETRA LARGE		26

Share same bulk bag.

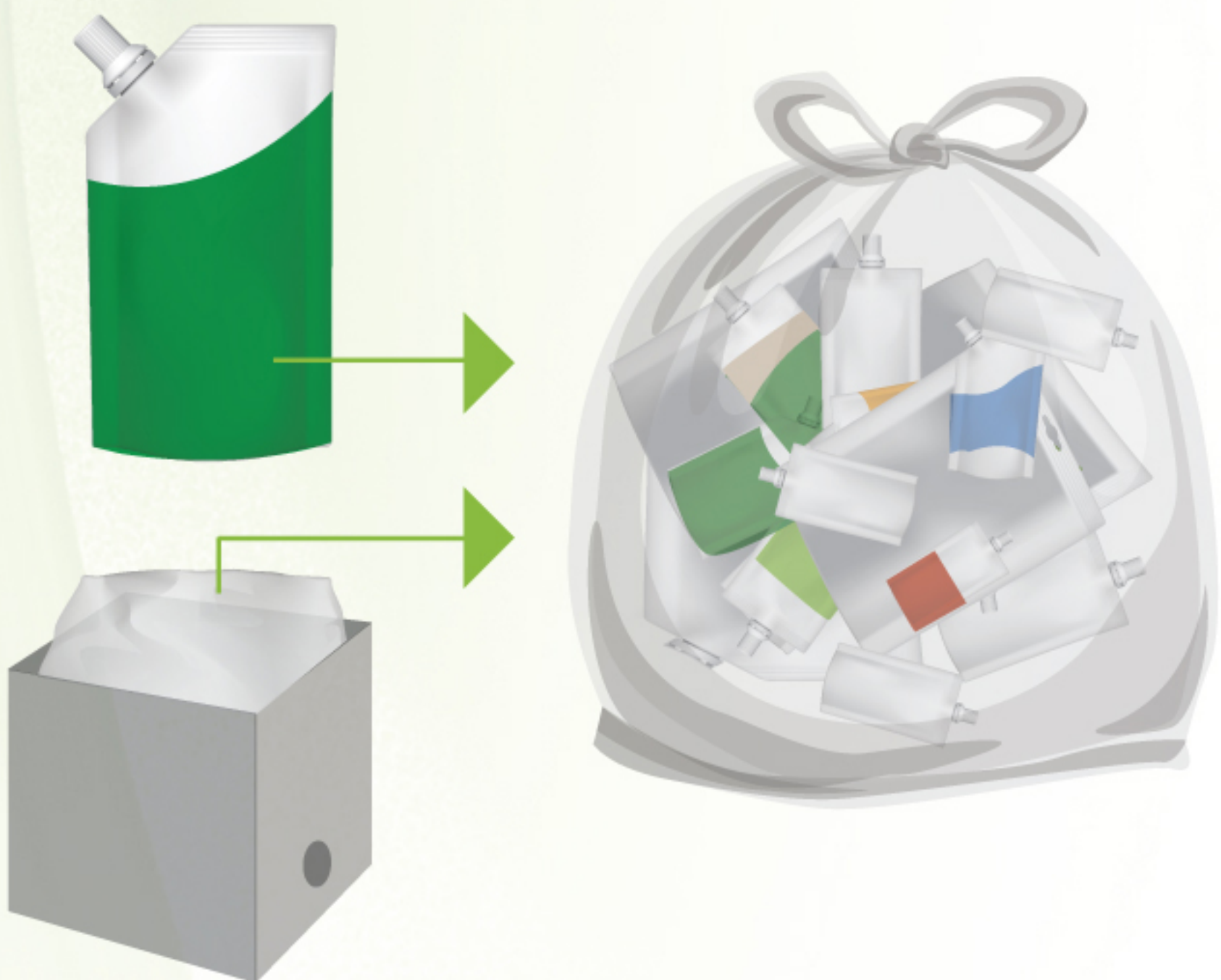
encorp re RECYCLE	
CENTRE #	BC 00-00
SORT # TRI #	QTY QTE
23	720
24	105

Share same bulk bag.

encorp re RECYCLE	
CENTRE #	BC 00-00
SORT # TRI #	QTY QTE
25	15
26	170



Fill to the line.  
Attach completed tag to black handle.  
Properly close bag.



- Put alcohol pouches in clear plastic bag.
- Toss plastic bag into sort 23/24 bulk bag.
- On bulk bag's tag, make sure to include/count all alcohol pouches as part of the total unit count for their respective sorts.
- Bladders must be removed from wine boxes.
- Bladders can be placed in same clear plastic bag as alcohol pouches.
- **DO NOT COUNT bladders** as part of any total unit counts.