

# Journal

4,200,000,000  
encorp re

SINCE 1992, ENCORP ATLANTIC HAS RECYCLED OVER 4.2 BILLION CONTAINERS IN NEW BRUNSWICK!

## WINTER 2022

### ▶ SHOW YOUR BARCODE TO DRIVERS

We would like to remind all redemption centres to make sure your barcode – which identifies your centre's BC number – is displayed at all times in your loading area in a highly visible and easily accessible location for drivers. This unique barcode is used to expedite bulk bag pick up and prevent manual data entry errors by drivers.

Drivers are instructed to scan the barcode when they arrive in your loading area to pick up bulk bags. This ensures all bulk bags will be accounted for and paid to your centre by Encorp.

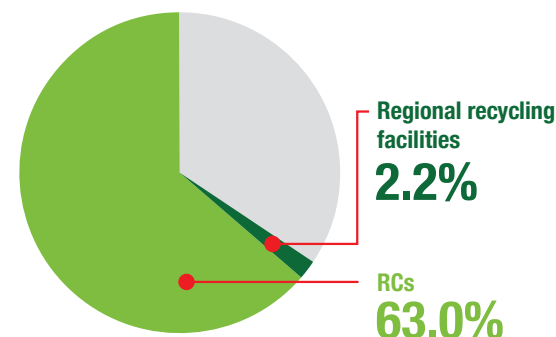
If you lose your barcode, or are experiencing issues with your barcode, please contact Paul Robichaud at 506.577.6651 or paul.robichaud@encorpatl.ca



### ▶ RECOVERY RATE

For the past 12 months as of December 31, 2021

65.2%



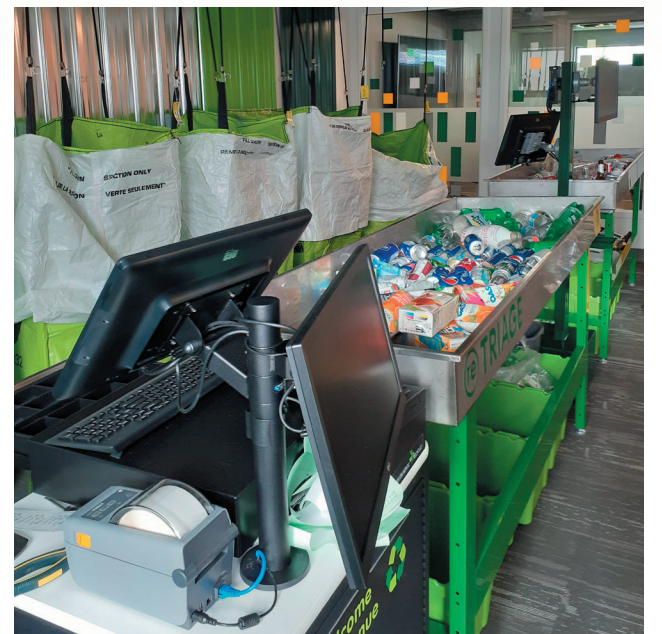
## POS – ALLOWANCE

The EnSys-Connex Point-of-Sale system (POS) is the foundation of Encorp Atlantic's new payment system for redemption centres (RC). Essentially, the POS will connect with scanners used daily by drivers during collection at centres across New Brunswick.

EnSys-Connex will be an essential management tool for your business and provide you with greater insight into your operations. The goals are to help you increase the transparency of beverage container redemption transactions for your customers, increase your staff's counting accuracy and efficiency, improve your inventory management abilities and shipping process, and provide you with reporting tools for your business. In addition, EnSys-Connex will be the backbone of the future province-wide Re-Express program, giving qualifying RCs who wish to offer a drop & go service to their customers the ability to process and credit bags received from drop & go users.

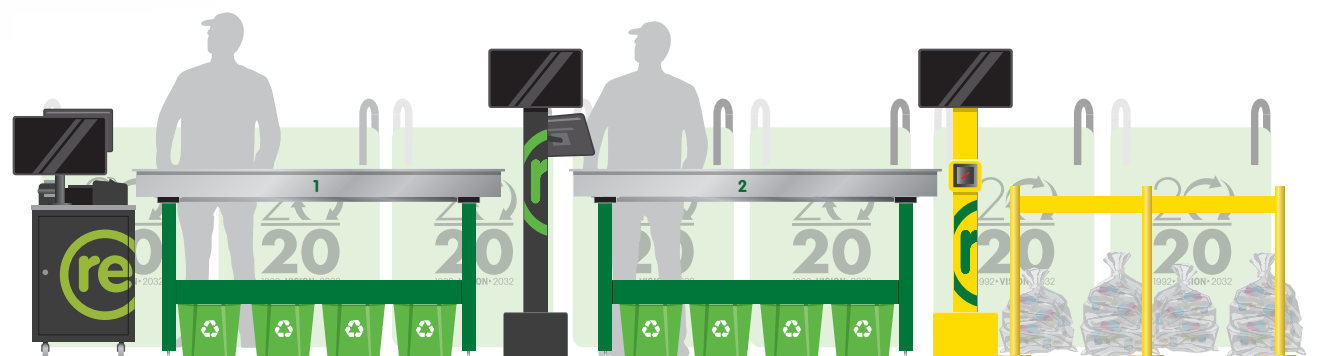
In preparation for the arrival of this system, Encorp will offer a one-time allowance to all RCs. This will provide owners with the ability to prepare for the arrival of the POS and the sorting tables provided by Encorp. Funds can be used for, but not limited to, site preparation, internet installation, additional training for staff members or closing for a day to allow for installation.

The deployment period for the POS will begin in early February 2022 and will take up to 18 months to complete. However, owners can access funding of \$2,500 immediately. This POS allowance will only be available until March 31st, 2022 for RCs who have committed to the installation of the POS and have entered into a service agreement with Encorp.



This investment is made possible with the business development strategy for RCs proposed by Encorp.

Contact Patrick Surette at (506)852-1965 or e-mail [patrick.surette@encorpatl.ca](mailto:patrick.surette@encorpatl.ca) to schedule a demonstration or to obtain further information on the benefits of the POS for your RC.



## ENCORP AT 30

To celebrate the 30<sup>th</sup> anniversary of the New Brunswick Beverage Containers Program, Encorp will be holding social events across the province for all redemption centre owners and staff in 2022.

Locations, dates and times to be announced.

On such occasions, one must reflect on the success of the past, but most importantly, on what the future holds for our industry. Encorp demonstrated its commitment to the sustainability of the New Brunswick Beverage Container Program and the long-term viability of the redemption centre business over the course of the last 30 years.

encorp 30re  
1992 • 2022

Going forward, cooperation amongst stakeholders is critical to the long-term viability of the redemption centre network in this province. We look forward to sharing with you the road ahead and to hear your ideas.

We hope to see you soon.

### YEAR TO YEAR REFUNDED UNITS

	Aluminum	Glass	PET	Other	Total
January 1, 2020 - December 31, 2020	69,980,146	2,097,427	90,295,828	7,584,665	169,958,066
January 1, 2021 - December 31, 2021	77,173,444	2,261,004	99,211,232	9,177,221	187,822,901
Yr to Yr Qty	7,193,298	163,577	8,915,404	1,592,556	17,864,835
Yr to Yr %	10.3%	7.8%	9.9%	21.0%	10.5%
% of Total	41.1%	1.2%	52.8%	4.9%	

For information or to report any incident, please contact:

- **Environment & Local Government - 506-453-7945** - For product registration, sorting questions and general inquiries
- **G.M. Rioux - 1-877-999-1764** - For scheduling, bulk bags and pallets
- **Encorp - 1-877-389-7320** - For payment inquiries and incident reports

### TO CONTACT US:

1-877-389-7320  
[www.encorpatl.ca](http://www.encorpatl.ca)

Moncton Area: 506-389-7320

PAULINE  
NOWLAN  
*Accounting*

ANGELA  
DOW  
*Accounting*

COLETTE  
BOUCHER  
*Finances*

PIERRE  
LANDRY  
*Environment*

PAUL  
ROBICHAUD  
*IT*

TIM  
PIDGEON  
*IT - Re-Centre*

FRANÇOIS  
CÔTÉ  
*IT*

MARTIN  
MALLET  
*IT*

ANDRÉ  
CORMIER  
*Communications*

PATRICK  
SURETTE  
*Implementation*

encorp re

[www.encorpatl.ca](http://www.encorpatl.ca)