

Journal



SINCE 1992, ENCORP ATLANTIC HAS RECYCLED OVER 3.8 BILLION CONTAINERS IN NEW BRUNSWICK!

FALL 2019

ACCURACY **99.76%**

For the period of April 1, 2019, to September 30, 2019, accuracy and quality control with redemption centres (RCs) has resulted in a fantastic accuracy rate of 99.76%. As of September 30th, only 8 RCs are in the accelerated mode. The sampling model also includes assessments of out-of-province containers and volume fluctuations to detect irregularities.

RETURN RATE **69.1%**

(As of September 30th 2019)

ONE-ON-ONE

Encorp Atlantic would like to invite all RC owners and staff to a one-on-one meeting and learning session at our Moncton office to help us develop necessary tools for growing your RC business and to provide us with feedback on a go-forward strategy for many operational tools and procedures, such as a point of sale (POS) system, inventory management and bag-drop options. Please contact us at 1-877-389-7320 to schedule your meeting with us.

PLASTIC BAG RECYCLING

Encorp Atlantic's plastic bag recycling program was launched during 2019 National Environment Week (June 2 - 8), the intent of the program being to collect and recycle all types of plastic bags received at RCs from customers. At this point, 45 RCs are participating in the program. On average, we pick up more than 85 full bulk bags filled with plastic bags every week. The plastic bag recycling program offers significant cost savings for RC operators. But most of all, the program is an added service for customers seeking solutions for their recycling needs.

We must remind RCs to be vigilant when putting plastic bags in Encorp bulk bags. Make sure the plastic bags are emptied first, to avoid contamination!

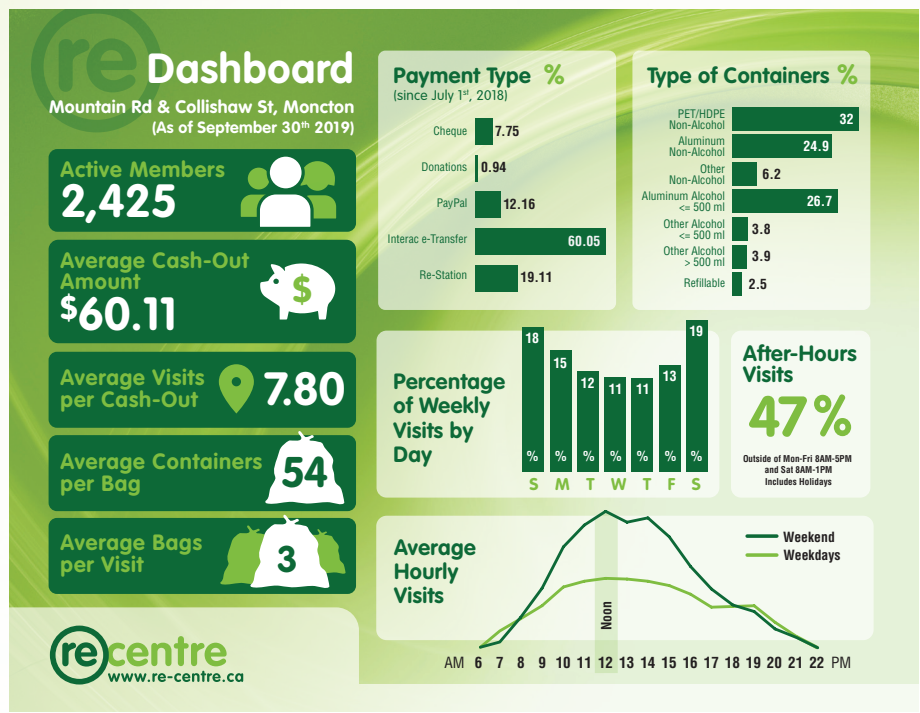


WEIGHT POLICY (SORT #1)

Aluminum bulk bags (Sort #1) with over 1,800 containers can cause weight issues for RC staff and collection drivers. For ease of handling, Encorp Atlantic's current policy limits Sort #1 bags to approximately 1,800 containers (+/- 100). Thank you for your co-operation!

DASHBOARD

Recent results from Encorp Atlantic's Re-Centre research pilot project continue to reveal interesting and changing consumer patterns. For instance, participants are willing to let their accounts accumulate to over \$60 before requesting payment. This completely changes the paradigm of the value of the current 5 cents return on a 10 cents deposit. Even the payment options used by participants have evolved throughout the research period. The majority of participants (60.5%) now use e-transfer as their preferred payment type. The Re-Station cash out at retail option (19.11%) offered since June 2018 (Sobeys Vaughan Harvey, Moncton) has also seen an upsurge in popularity. Weekends remain the most popular time for consumers to drop off their used beverage containers.



NEW BULK BAGS

Most RC operators have probably noticed by now the new Encorp Atlantic bulk bags being distributed. The bulk bag's renewed design has several improvements and advantages. The quality and integrity of our bulk bags is something that we take seriously. Every year, we replenish about 30% of our inventory. RCs should not have to use any damaged or worn-out bulk bags for the collection of used beverage containers. All damaged bags should be returned to the drivers during regular pickup. Discarded bags are inspected and recycled at Fundy Plastics in Pennfield, New Brunswick.

Renewed design with several advantages:

- Same inside dimensions: 94 x 94 x 119 cm
- Double hemmed finishing seams (to prevent edge fraying)
- **A black handle (to indicate where to place the yellow tag so that it is more visible and avoid double labelling)**
- 4 crossed and rigid 10" corner handles sewn on the outside (to facilitate hanging, handling and transporting full bags)
- Thicker and stronger fabric (to extend its life)
- Double bottom (to avoid premature wear)
- Seamless circular bag (to avoid loosening of the seams)



YEAR TO YEAR REFUNDED UNITS

	Aluminum	Glass	PET	Other	Total
August 1- September 30 2018	66,417,937	2,070,591	94,641,284	9,878,107	173,007,919
August 1- September 30 2019	68,359,086	2,100,926	93,165,494	8,836,744	172,462,250
Year to Year Qty	1,941,149	30,335	-1,475,790	-1,041,363	-545,669
Year to Year %	2.92%	1.47%	-1.56%	-10.54%	-0.32%
% of Total	39.64%	1.22%	54.02%	5.21%	

For information or to report any incident, please contact:

- **Environment & Local Government - 506-453-7945** - For product registration, sorting questions and general inquiries
- **Rioux Transport - 1-877-999-1764** - For scheduling, bulk bags and pallets
- **Encorp - 1-877-389-7320** - For payment inquiries and incident reports

TO CONTACT US:
1-877-389-7320 • www.encorpatl.ca
Moncton Area: 506-389-7320

Pauline Nowlan Accounting | Paul Robichaud IT | François Côté Software Developer | Colette Boucher Finance | Pierre Landry Environment | Tim Pidgeon Re-Centre Re-Express | Mario Cyr QA-QC



www.encorpatl.ca